

# Xybots™ Schematic Package

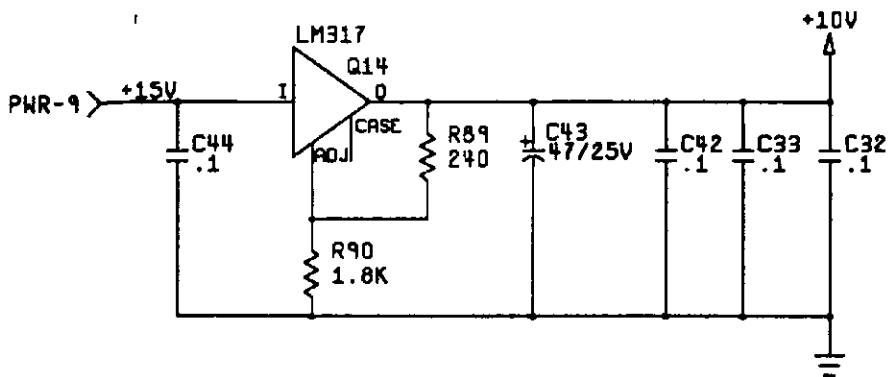
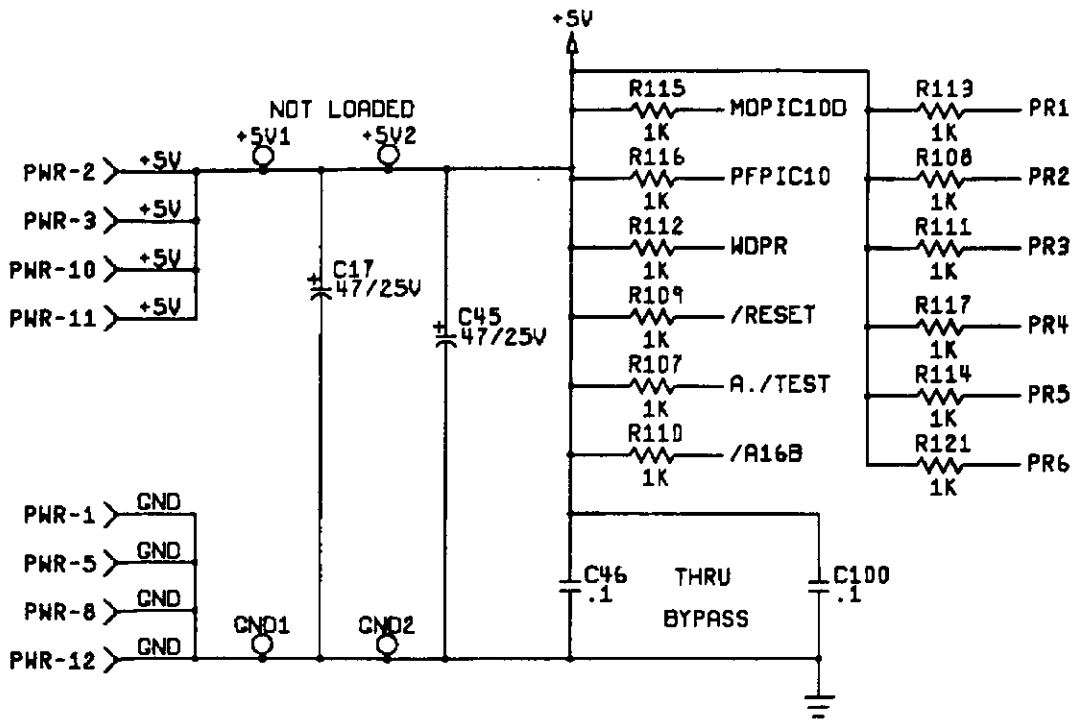
Supplement to the Operators Manual

**NOTE**

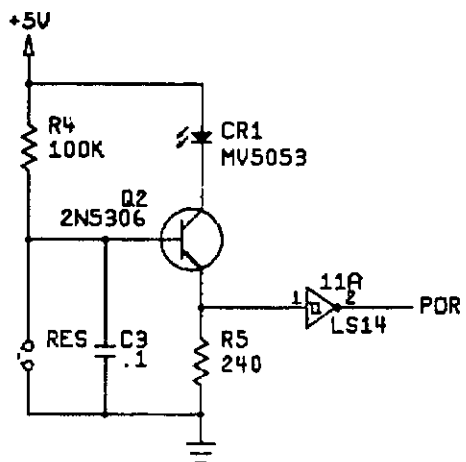
This staple temporarily holds the schematic package together. Remove the staple before using these schematics.

# Table of Contents

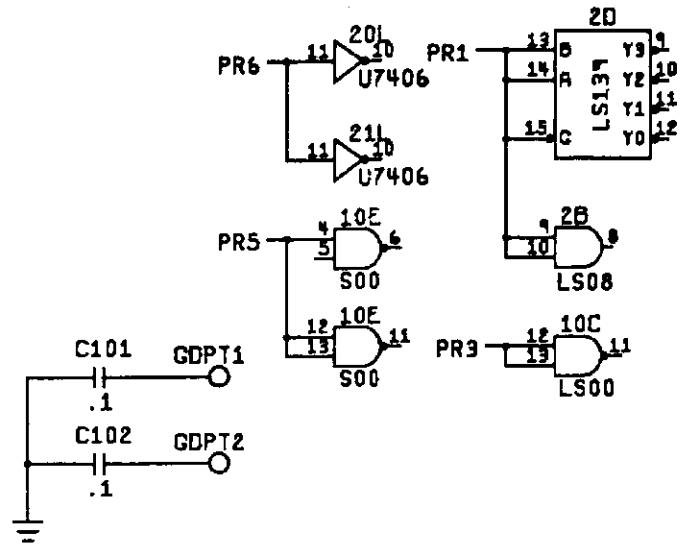
Xybots™ Game PCB Assembly Schematic Diagram .....	Sheets 1-9
Xybots Main Wiring Diagram and Detailed Control Panel Wiring Diagram .....	Sheet 10
Stand-Alone Audio PCB Assembly Schematic Diagram .....	Sheets 11-14
Wiring Diagrams for Switching/Linear (SL) Power Supply, Hitron 5V 10A Switching Power Supply, and Coin Door .....	Sheet 15
Xybots Harness Installation .....	Sheet 16



PWR-4 > NC  
 PWR-6 > NC  
 PWR-7 > NC



# SPARE GATES



## NOTES: UNLESS OTHERWISE SPECIFIED

1. RESISTOR VALUES ARE IN OHMS, 1/8W.

### NOTICE TO ALL PERSONS RECEIVING THIS DRAWING

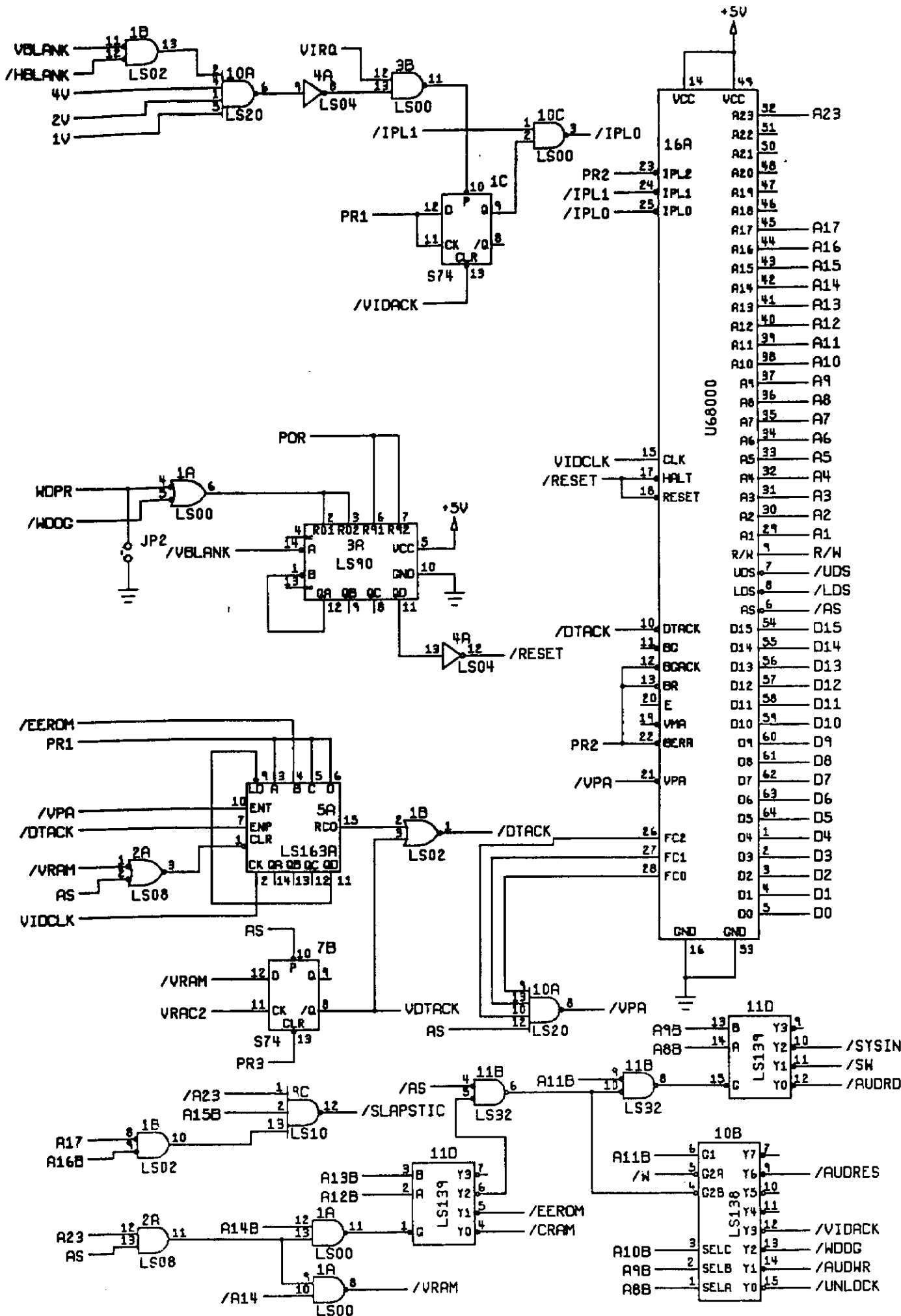
CONFIDENTIAL: Reproduction forbidden without the specific written permission of Atari Games Corporation, Milpitas, CA. This drawing is only conditionally issued, and neither receipt nor possession thereof confers or transfers any right in, or license to use, the subject matter of the drawing or any design or technical information shown thereon, nor any right to reproduce this drawing or any part thereof. Except for manufacture by vendors of Atari Games Corporation, and for manufacture under the corporation's written license, no right is granted to reproduce this drawing or the subject matter thereof, unless by written agreement with or written permission from the corporation.

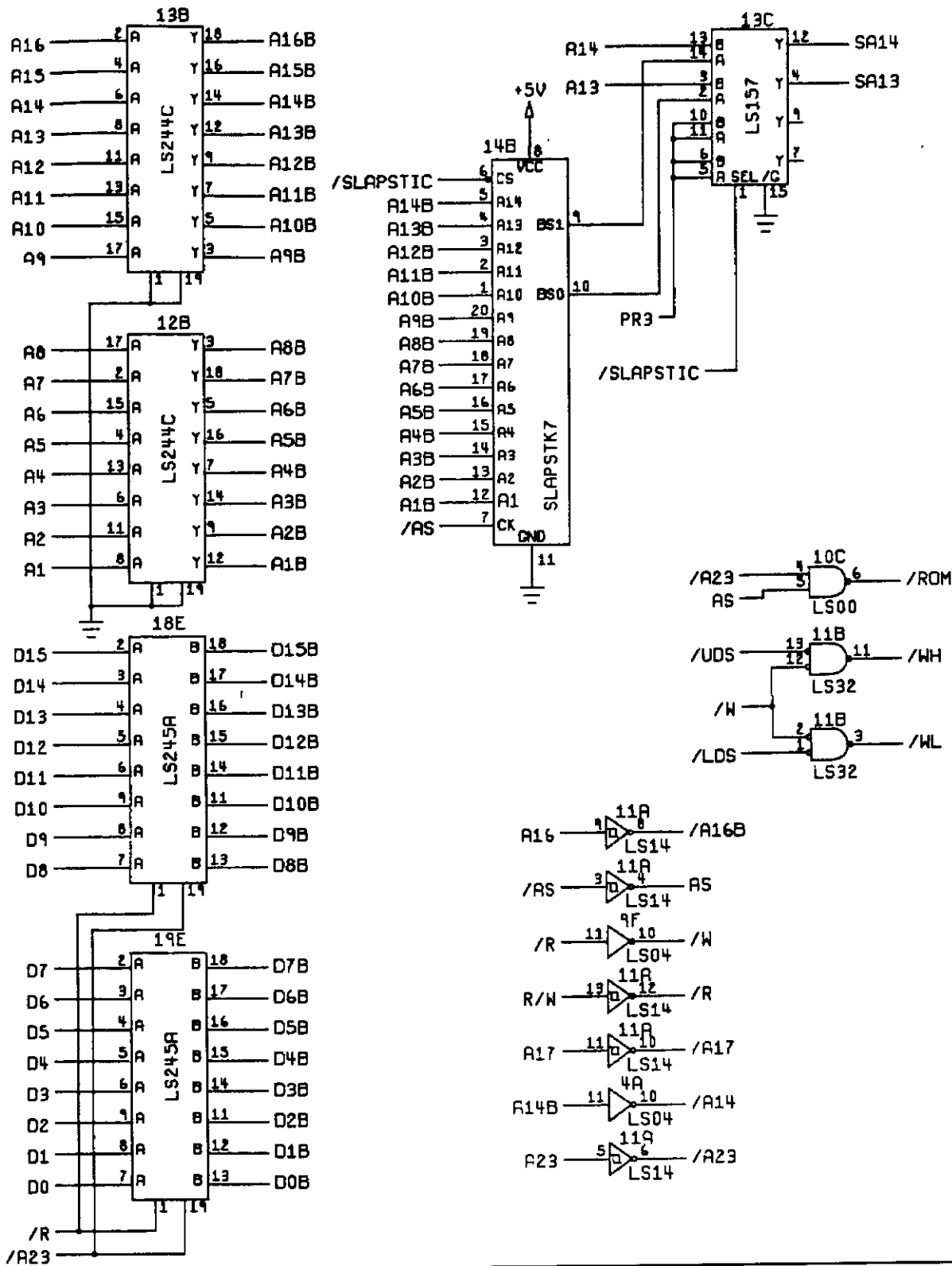


## Xybots™ Game PCB Assembly Schematic Diagram

© 1987 Atari Games Corporation

SP-313 Sheet 1  
1st printing





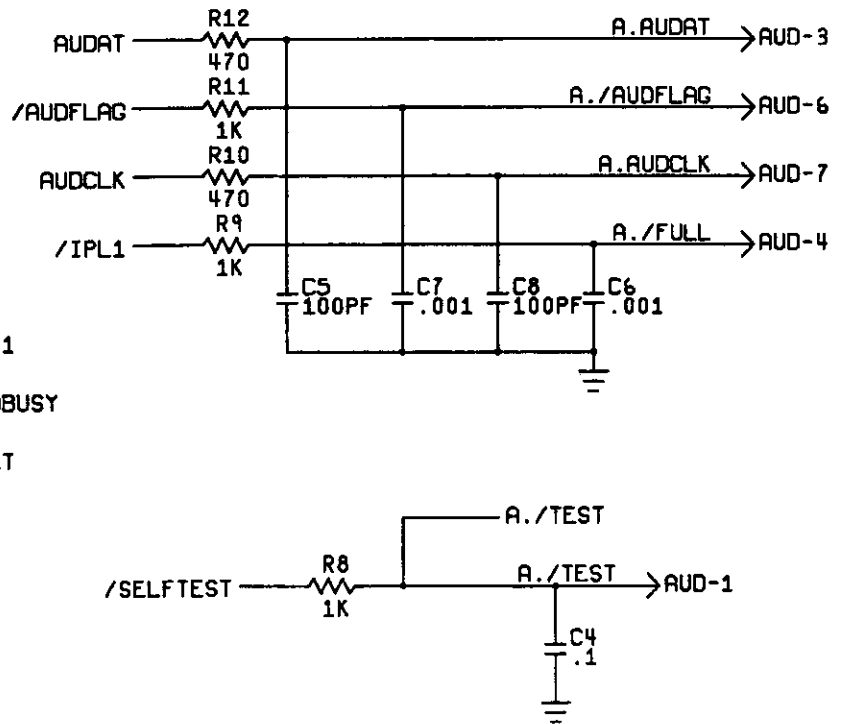
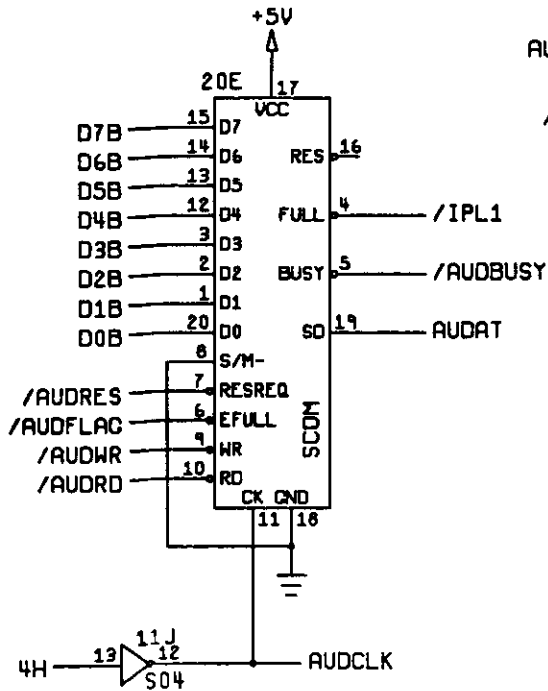
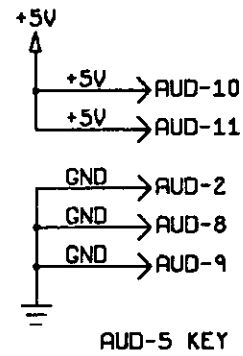
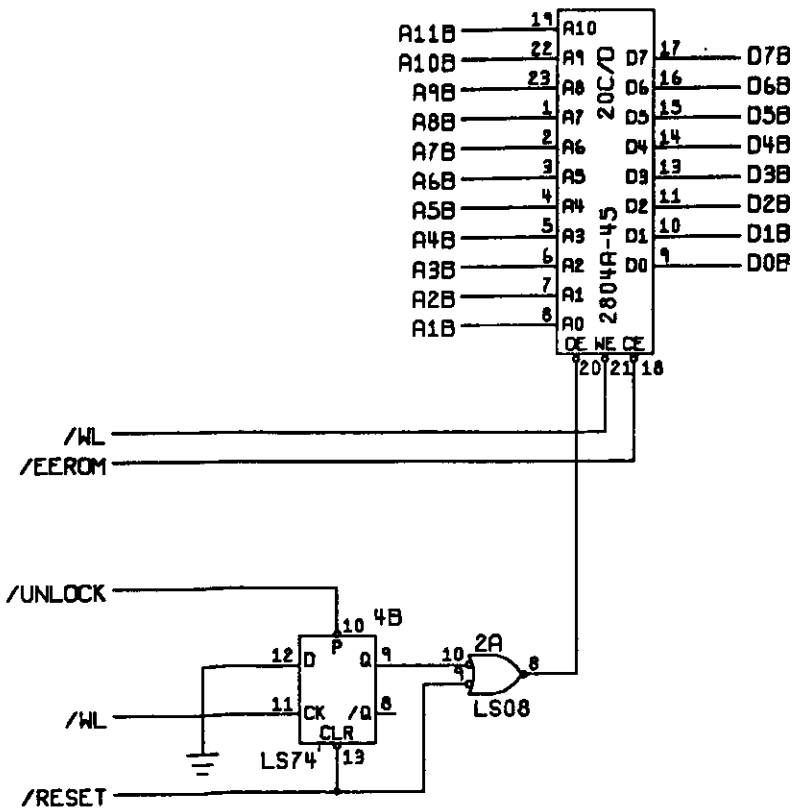
**NOTICE TO ALL PERSONS RECEIVING THIS DRAWING**  
 CONFIDENTIAL: Reproduction forbidden without the specific written permission of Atari Games Corporation, Milpitas, CA. This drawing is only conditionally issued, and neither receipt nor possession thereof confers or transfers any right in, or license to use, the subject matter of the drawing or any design or technical information shown thereon, nor any right to reproduce this drawing or any part thereof. Except for manufacture by vendors of Atari Games Corporation, and for manufacture under the corporation's written license, no right is granted to reproduce this drawing or the subject matter thereof, unless by written agreement with or written permission from the corporation.

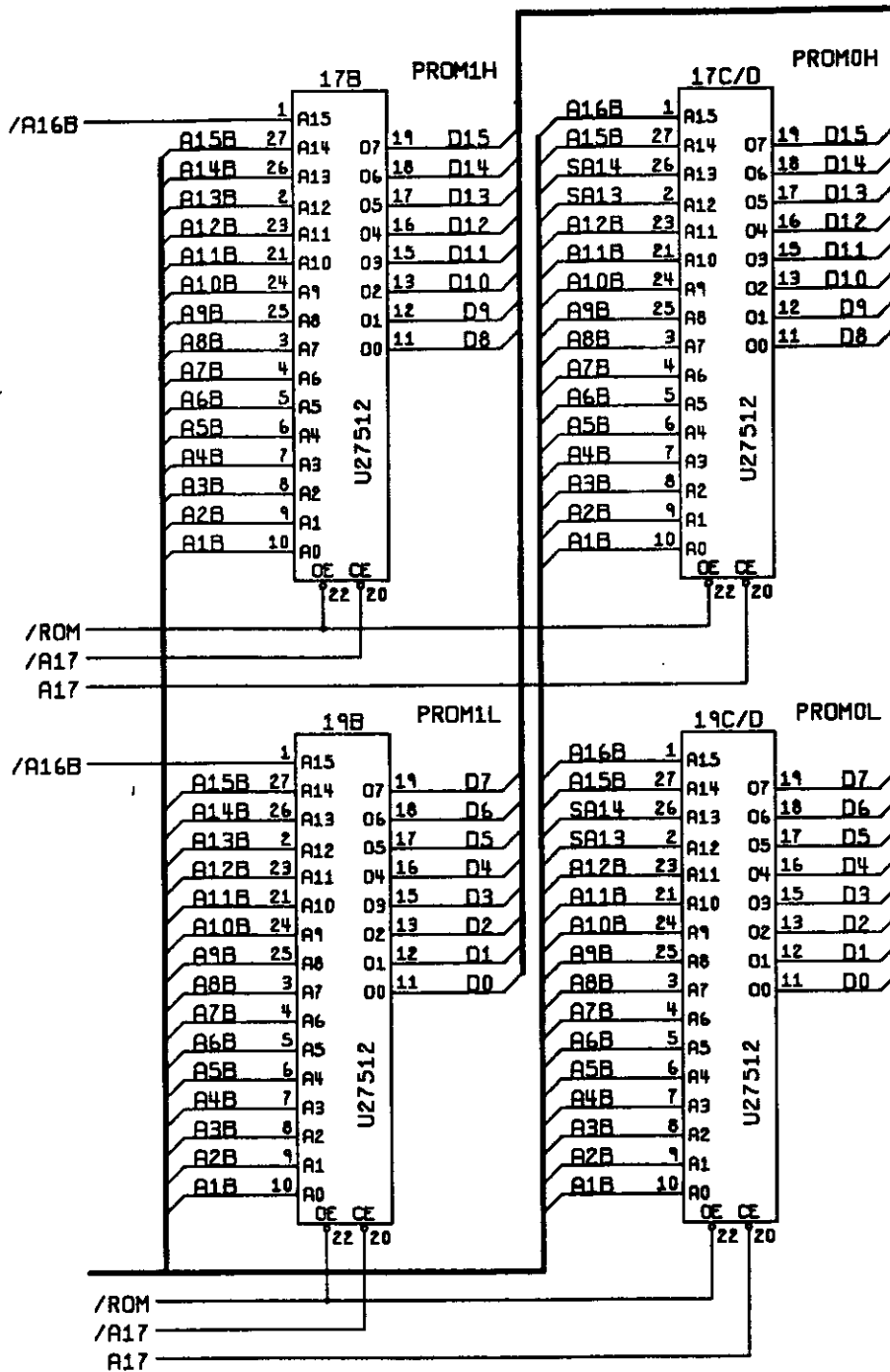


### Xybots™ Game PCB Assembly Schematic Diagram

© 1987 Atari Games Corporation

SP-313 Sheet 2  
 1st printing





**NOTICE TO ALL PERSONS RECEIVING THIS DRAWING**

CONFIDENTIAL: Reproduction forbidden without the specific written permission of Atari Games Corporation, Milpitas, CA. This drawing is only conditionally issued, and neither receipt nor possession thereof confers or transfers any right in, or license to use, the subject matter of the drawing or any design or technical information shown thereon, nor any right to reproduce this drawing or any part thereof. Except for manufacture by vendors of Atari Games Corporation, and for manufacture under the corporation's written license, no right is granted to reproduce this drawing or the subject matter thereof, unless by written agreement with or written permission from the corporation.

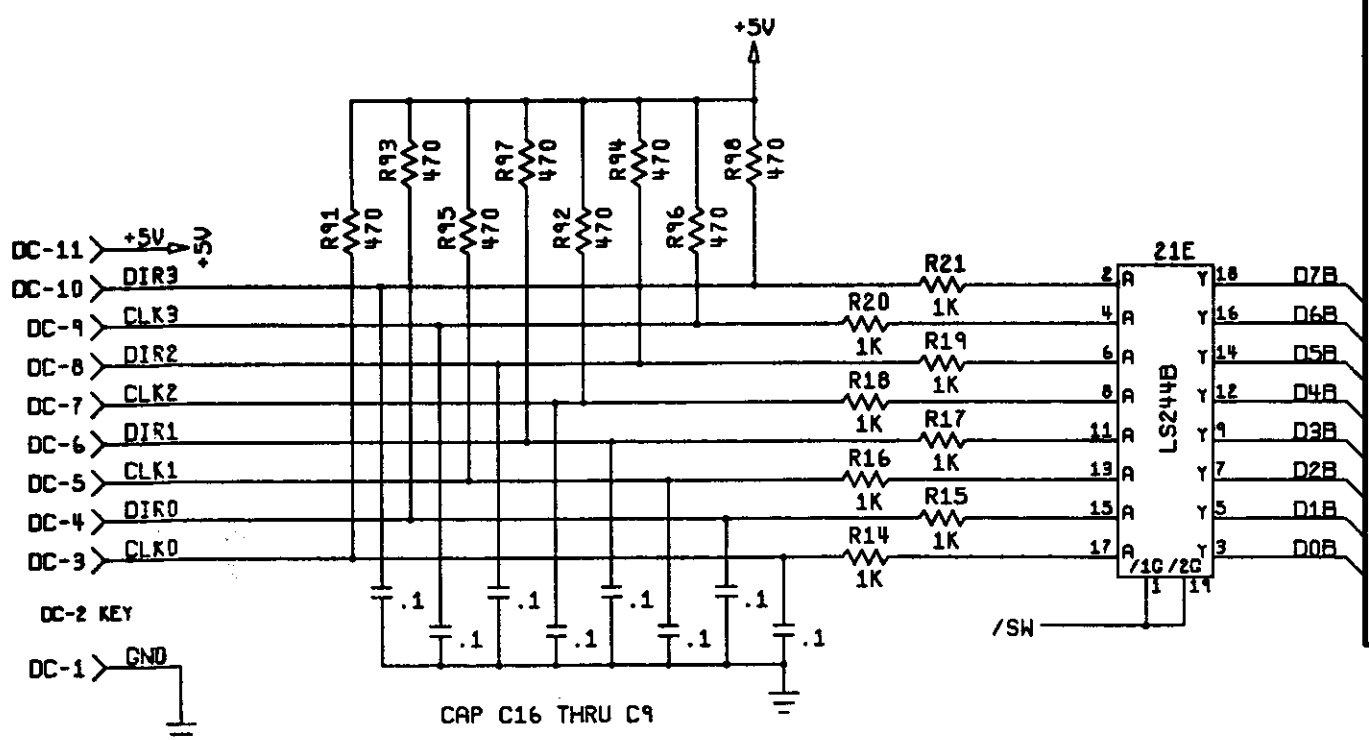
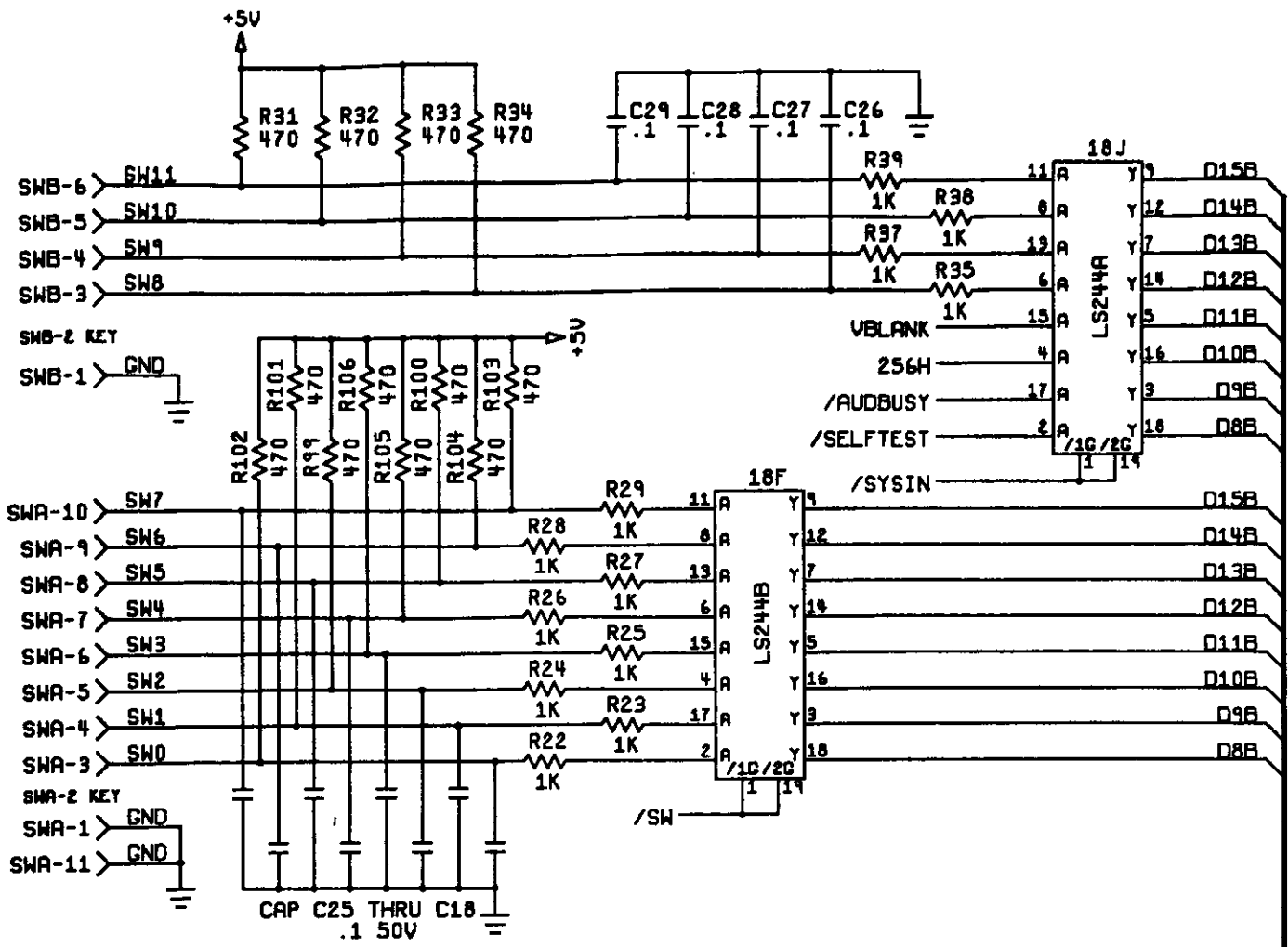


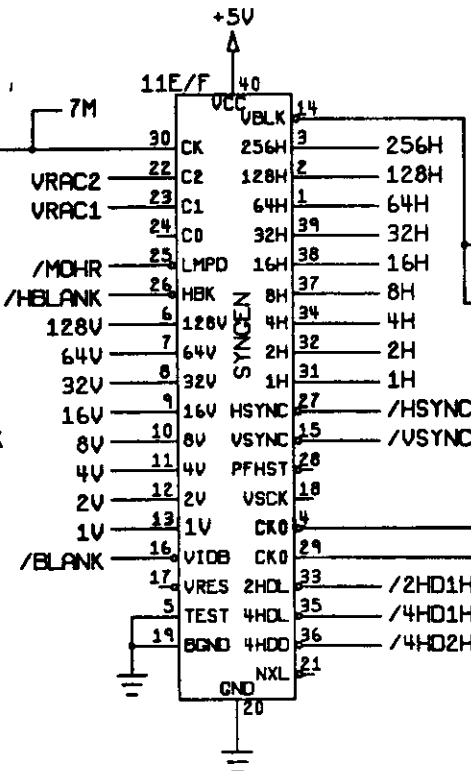
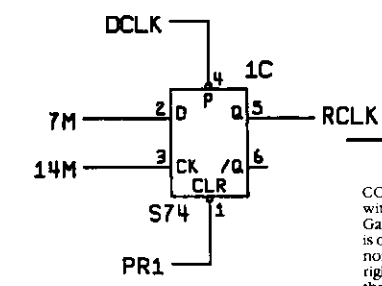
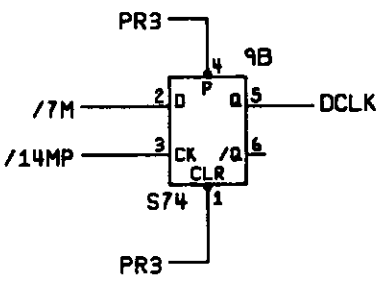
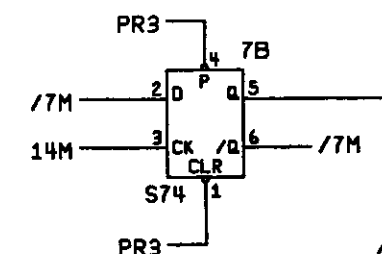
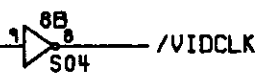
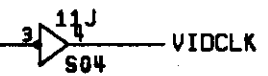
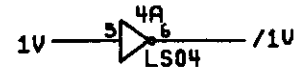
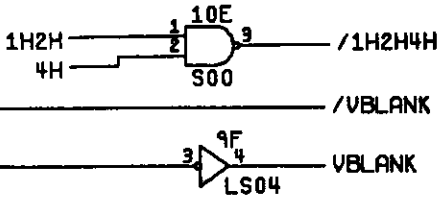
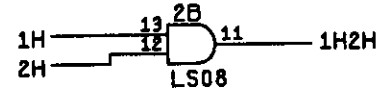
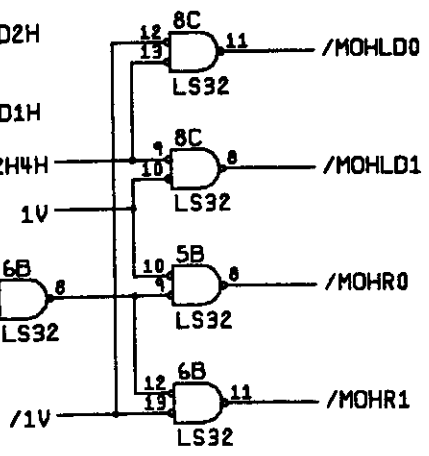
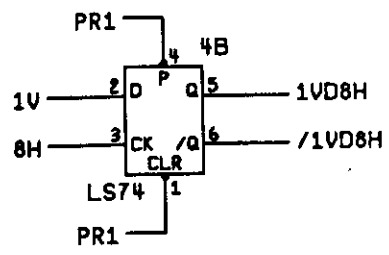
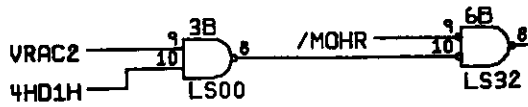
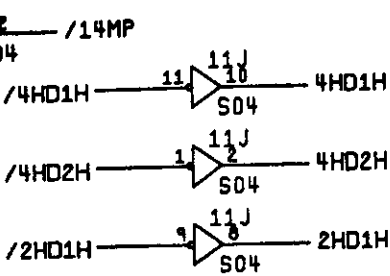
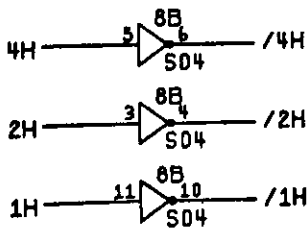
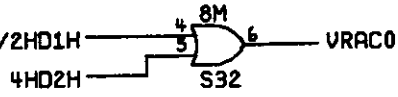
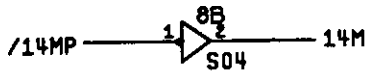
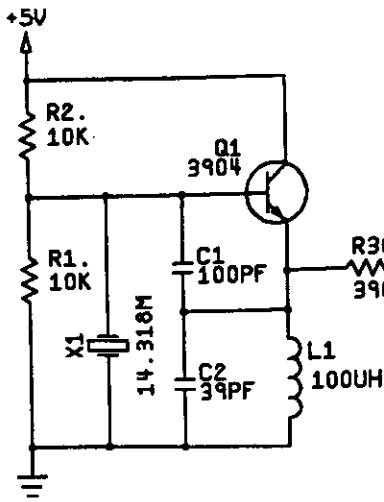
**Xybots™ Game PCB Assembly Schematic Diagram**

© 1987 Atari Games Corporation

SP-313 Sheet 3  
1st printing







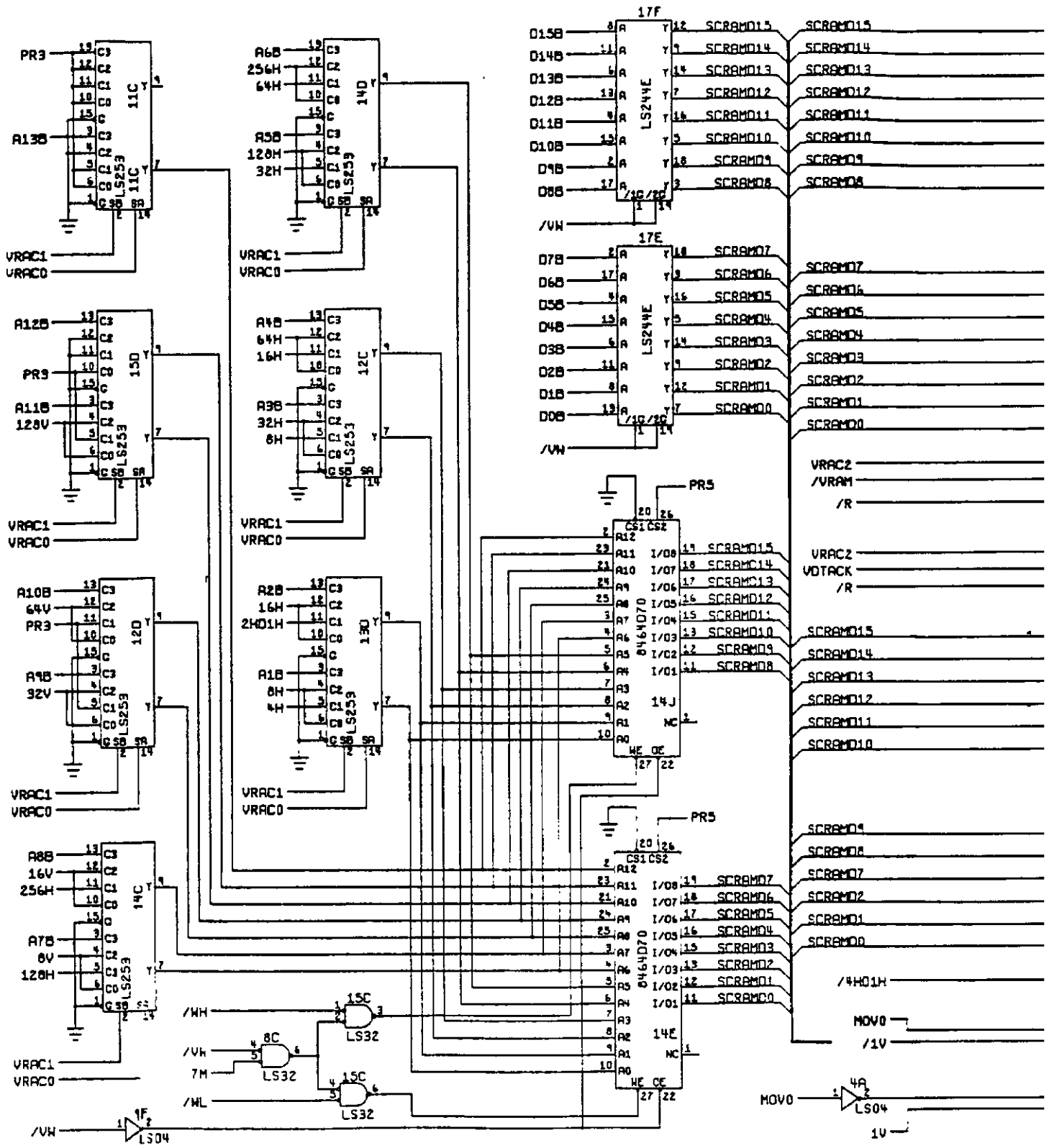
**NOTICE TO ALL PERSONS RECEIVING THIS DRAWING**  
 CONFIDENTIAL: Reproduction forbidden without the specific written permission of Atari Games Corporation, Milpitas, CA. This drawing is only conditionally issued, and neither receipt nor possession thereof confers or transfers any right in, or license to use, the subject matter of the drawing or any design or technical information shown thereon, nor any right to reproduce this drawing or any part thereof. Except for manufacture by vendors of Atari Games Corporation, and for manufacture under the corporation's written license, no right is granted to reproduce this drawing or the subject matter thereof, unless by written agreement with or written permission from the corporation.

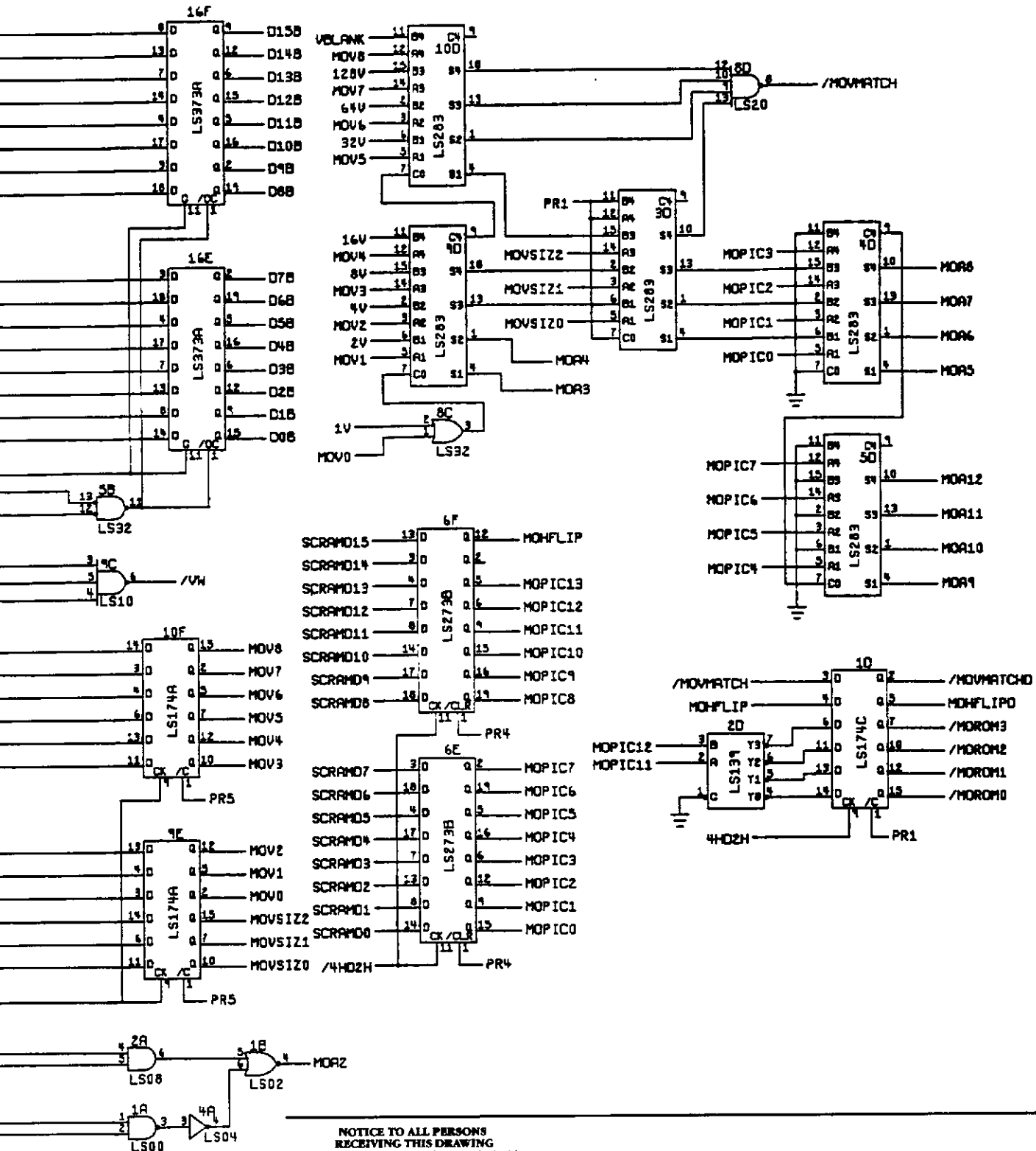


### Xybots™ Game PCB Assembly Schematic Diagram

© 1987 Atari Games Corporation

SP-313 Sheet 4  
1st printing



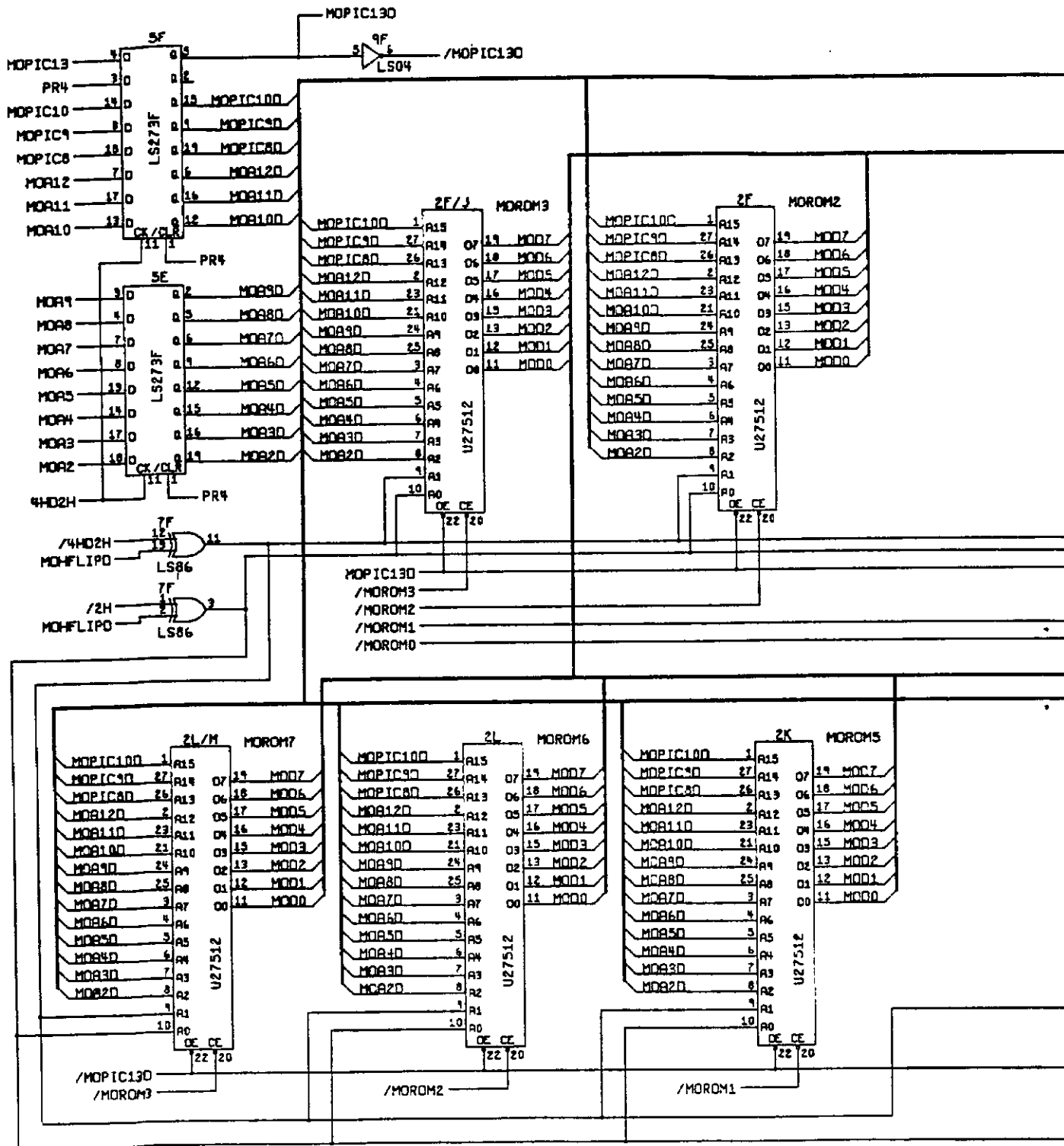


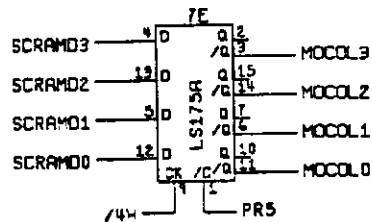
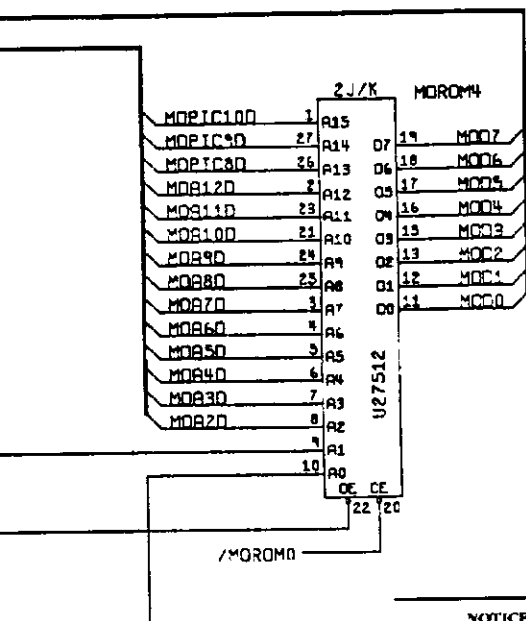
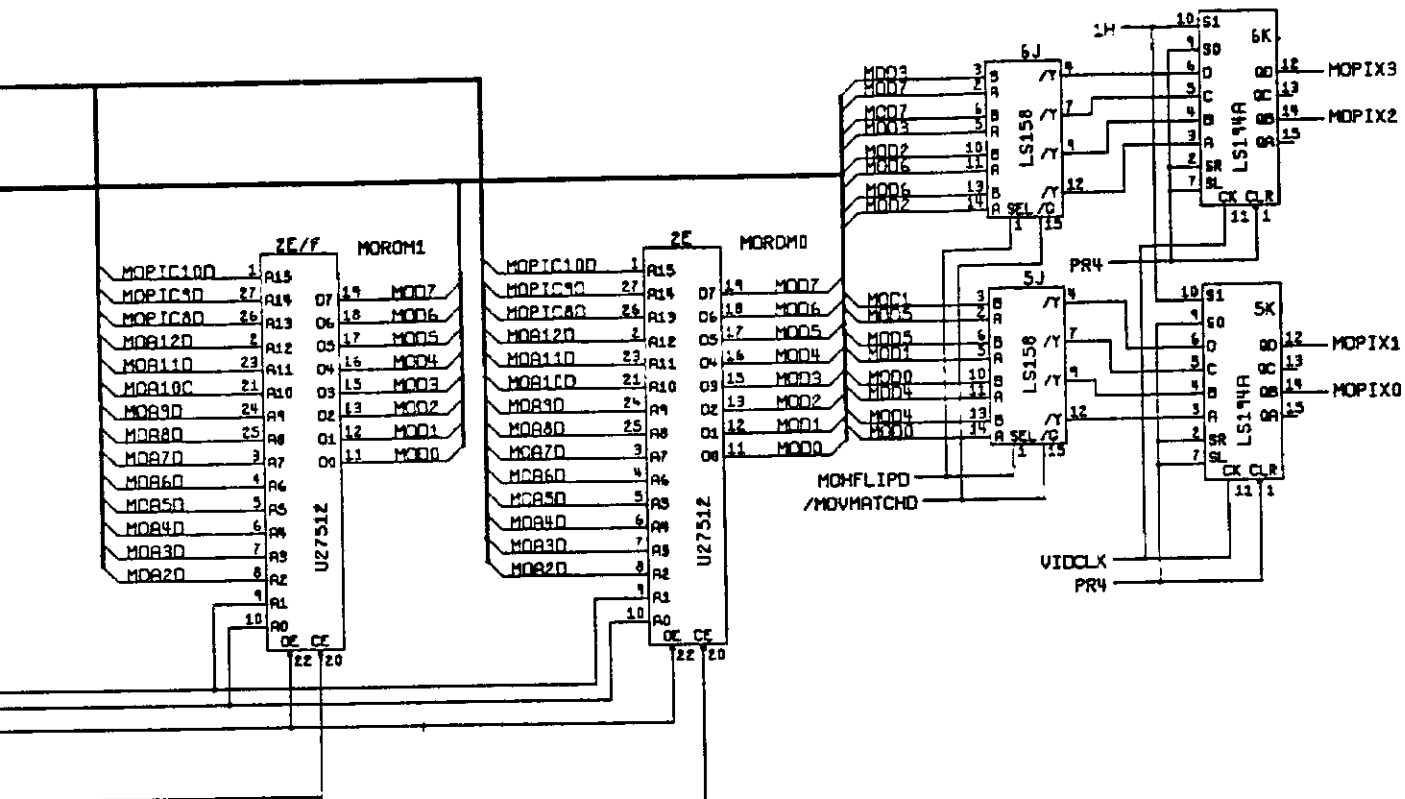
**NOTICE TO ALL PERSONS RECEIVING THIS DRAWING**

CONFIDENTIAL. Reproduction forbidden without the specific written permission of Atari Games Corporation, Milpitas, CA. This drawing is only conditionally issued, and neither receipt nor possession thereof confers or transfers any right in, or license to use, the subject matter of the drawing or any design or technical information shown thereon, nor any right to reproduce this drawing or any part thereof. Except for manufacture by vendors of Atari Games Corporation, and for manufacture under the corporation's written license, no right is granted to reproduce this drawing or the subject matter thereof, unless by written agreement with or written permission from the corporation.



## Xybots™ Game PCB Assembly Schematic Diagram





**NOTICE TO ALL PERSONS RECEIVING THIS DRAWING**

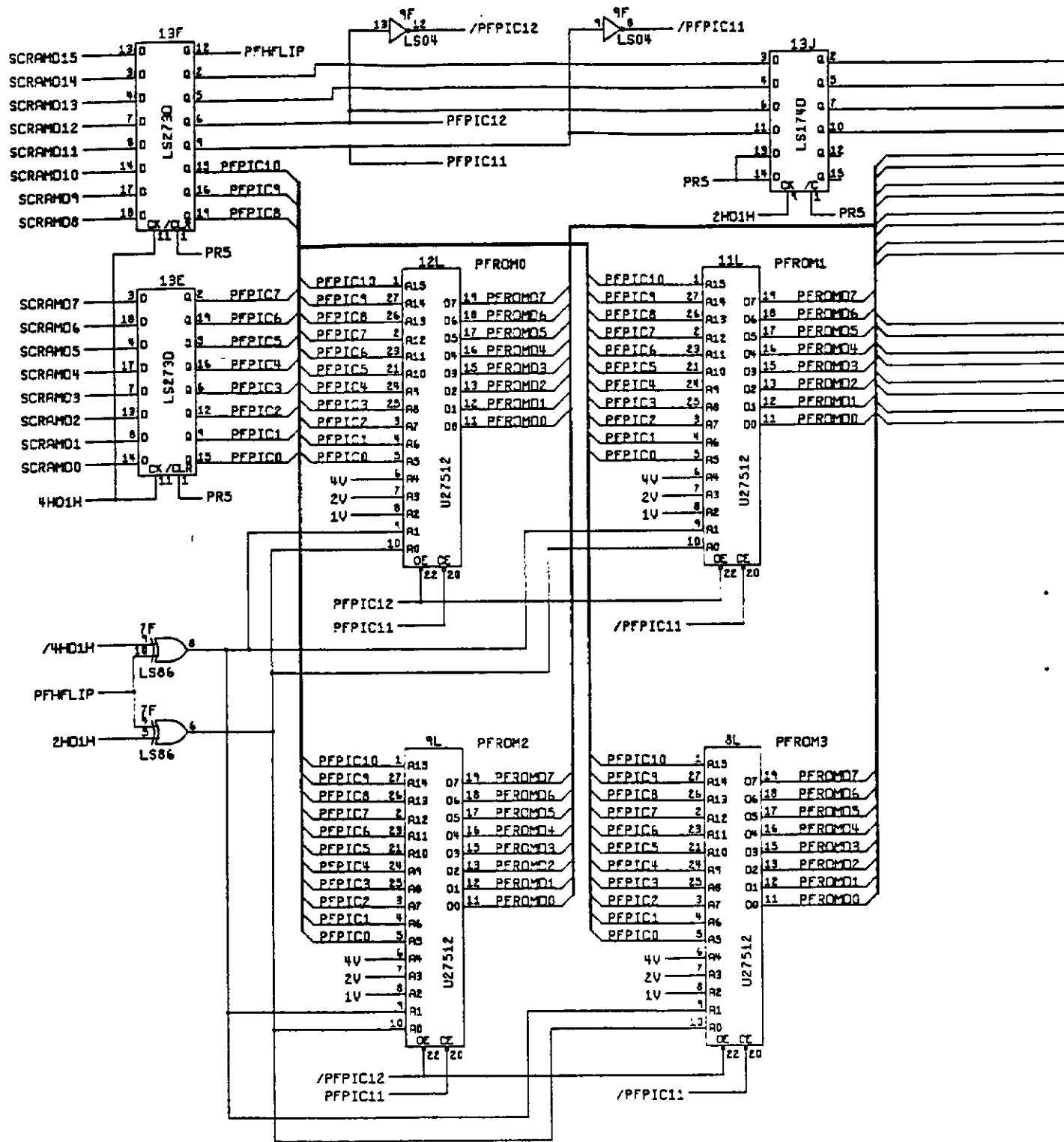
CONFIDENTIAL. Reproduction forbidden without the specific written permission of Atari Games Corporation, Milpitas, CA. This drawing is only conditionally issued, and neither receipt nor possession thereof confers or transfers any right in, or license to use, the subject matter of the drawing or any design or technical information shown thereon, nor any right to reproduce this drawing or any part thereof. Except for manufacture by vendors of Atari Games Corporation, and for manufacture under the corporation's written license, no right is granted to reproduce this drawing or the subject matter thereof, unless by written agreement with or written permission from the corporation.

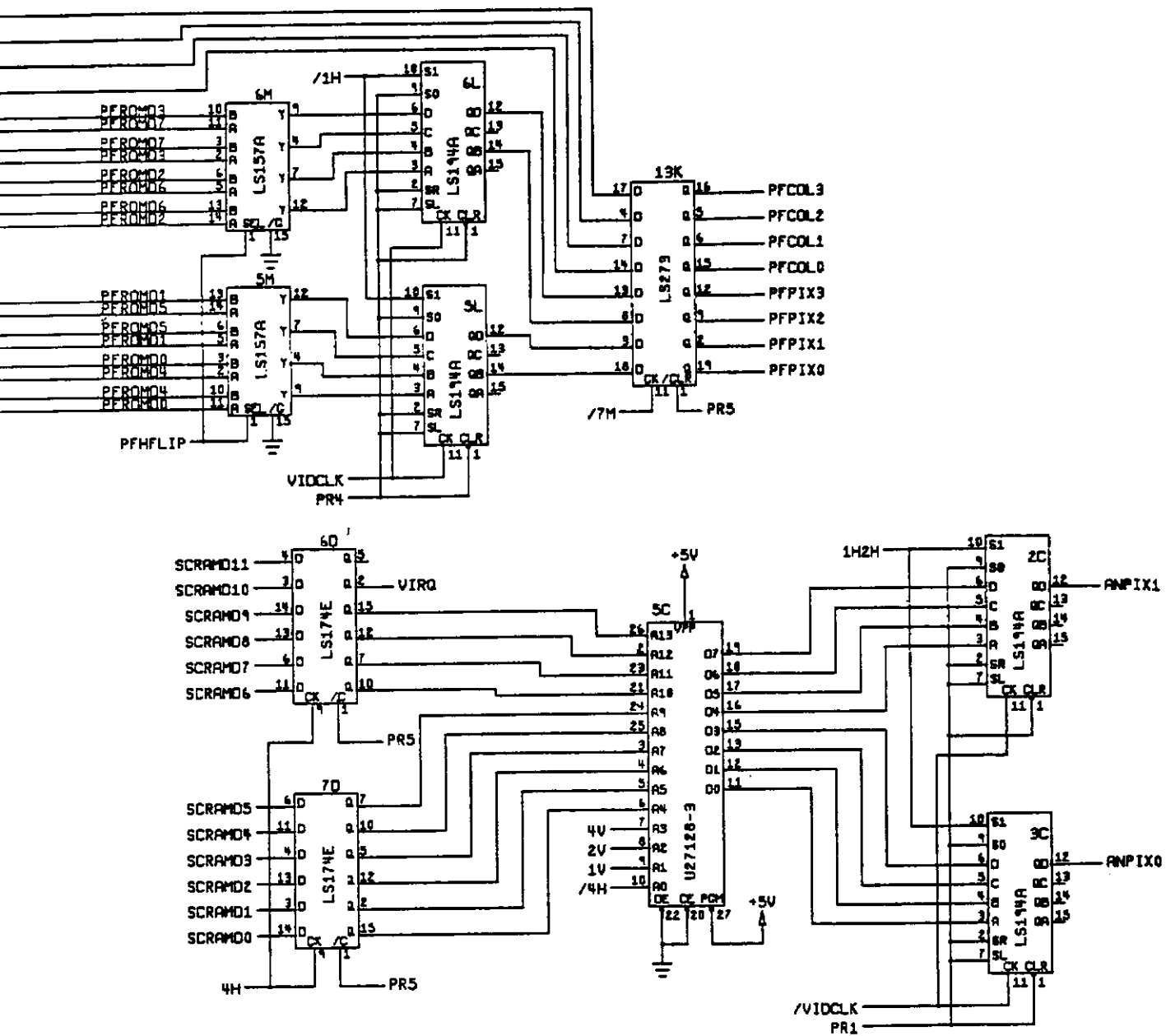
**Xybots™ Game PCB Assembly Schematic Diagram**



© 1987 Atari Games Corporation

SP-313 Sheet 6  
1st printing





**NOTICE TO ALL PERSONS RECEIVING THIS DRAWING**

CONFIDENTIAL. Reproduction forbidden without the specific written permission of Atari Games Corporation, Milpitas, CA. This drawing is only conditionally issued, and neither receipt nor possession thereof confers or transfers any right in, or license to use, the subject matter of the drawing or any design or technical information shown thereon, nor any right to reproduce this drawing or any part thereof. Except for manufacture by vendors of Atari Games Corporation, and for manufacture under the corporation's written license, no right is granted to reproduce this drawing or the subject matter thereof, unless by written agreement with or written permission from the corporation.

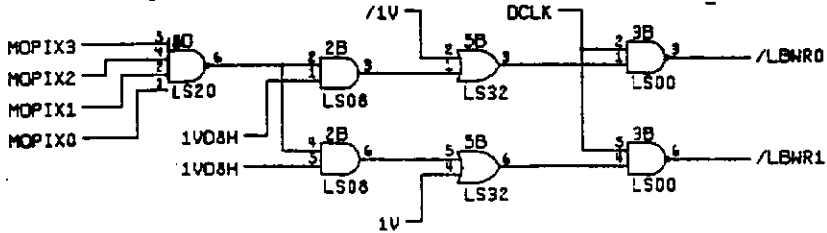
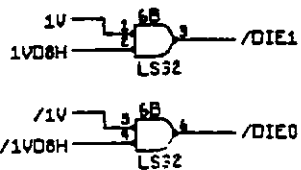
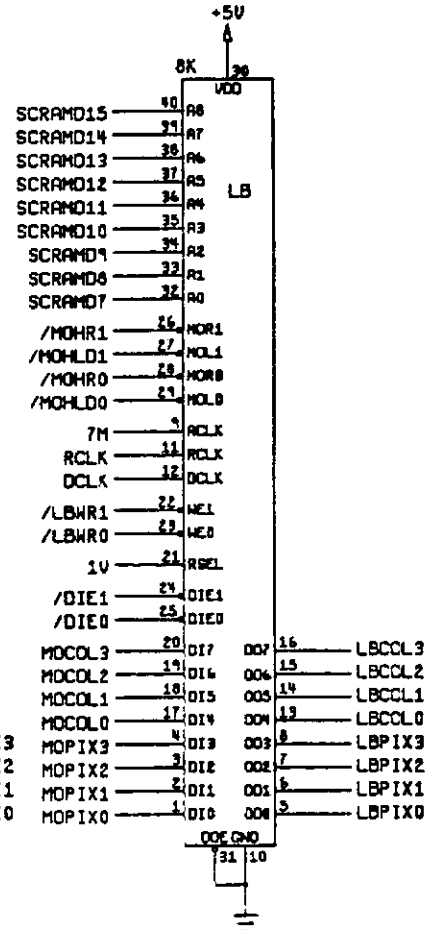
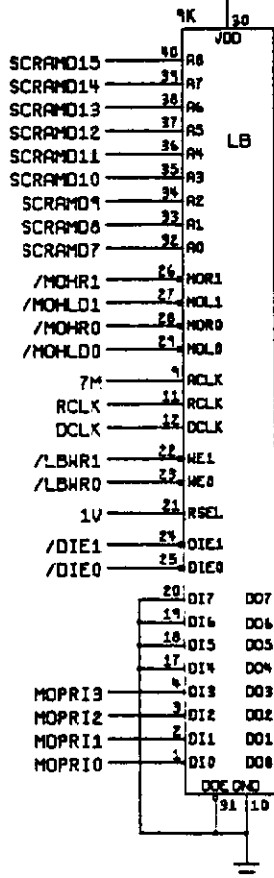
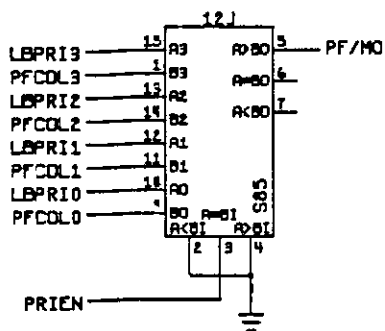
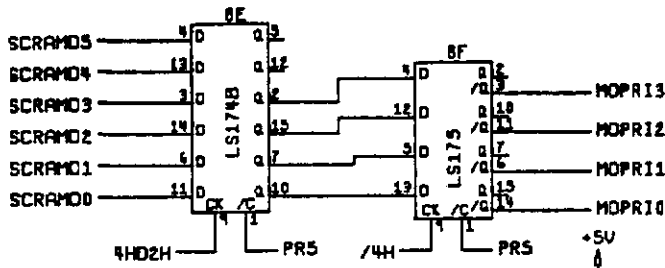


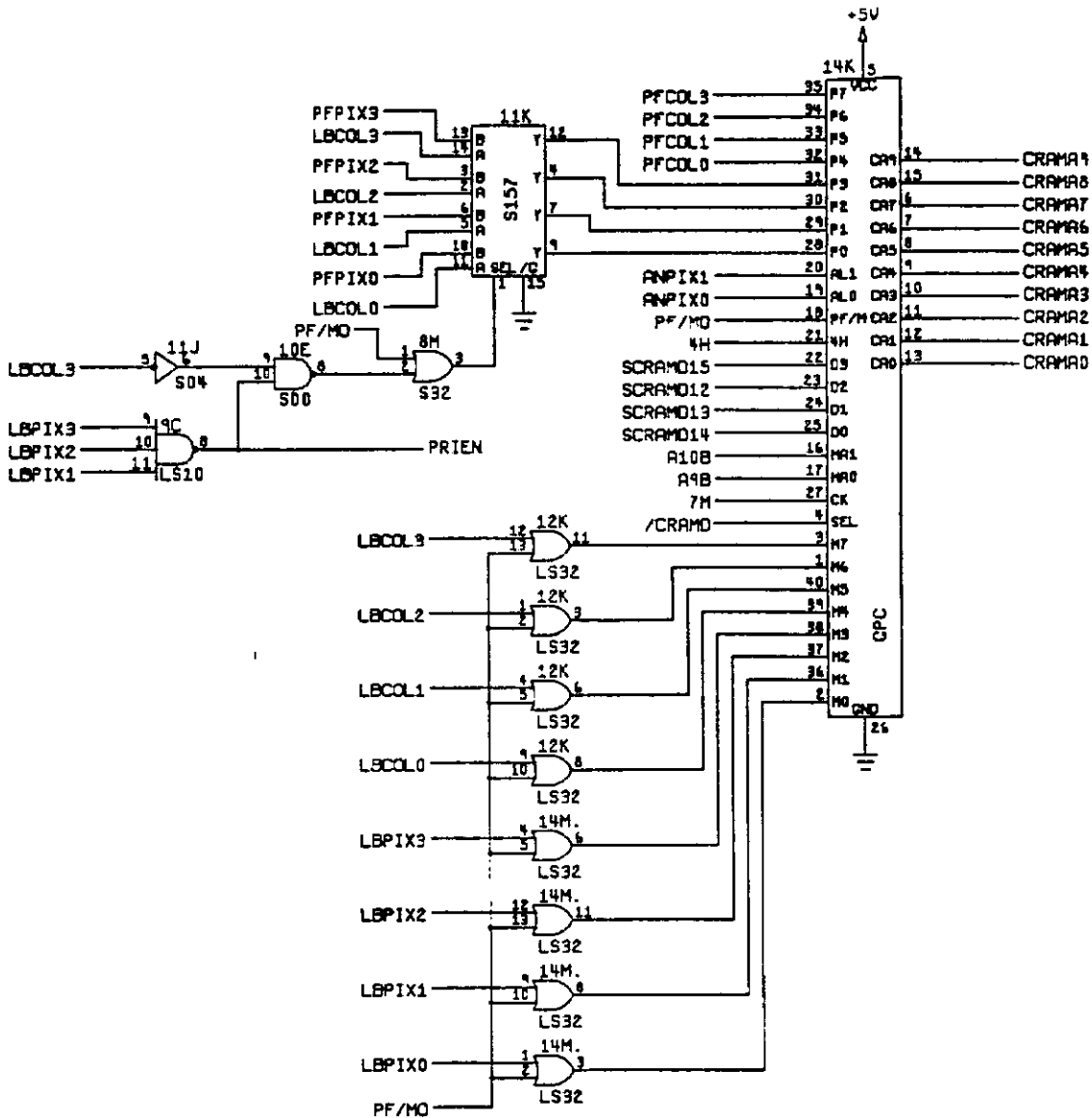
**Xybots™ Game PCB Assembly Schematic Diagram**

© 1987 Atari Games Corporation

SP-313 Sheet 7  
1st printing







**NOTICE TO ALL PERSONS  
RECEIVING THIS DRAWING**

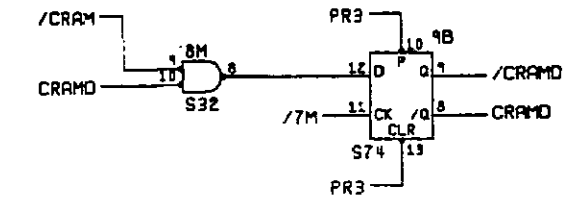
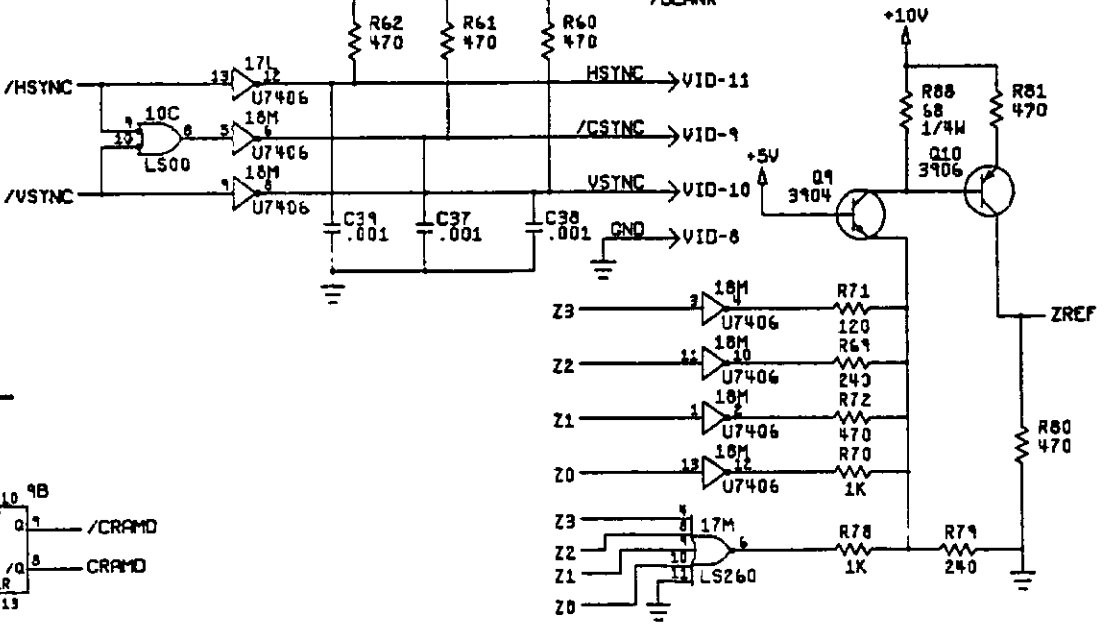
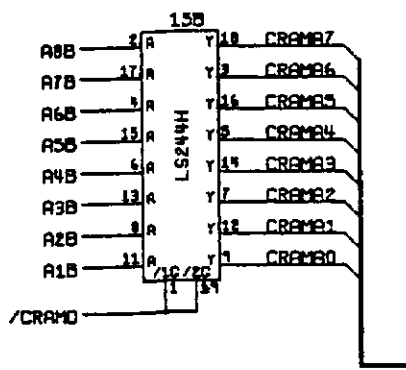
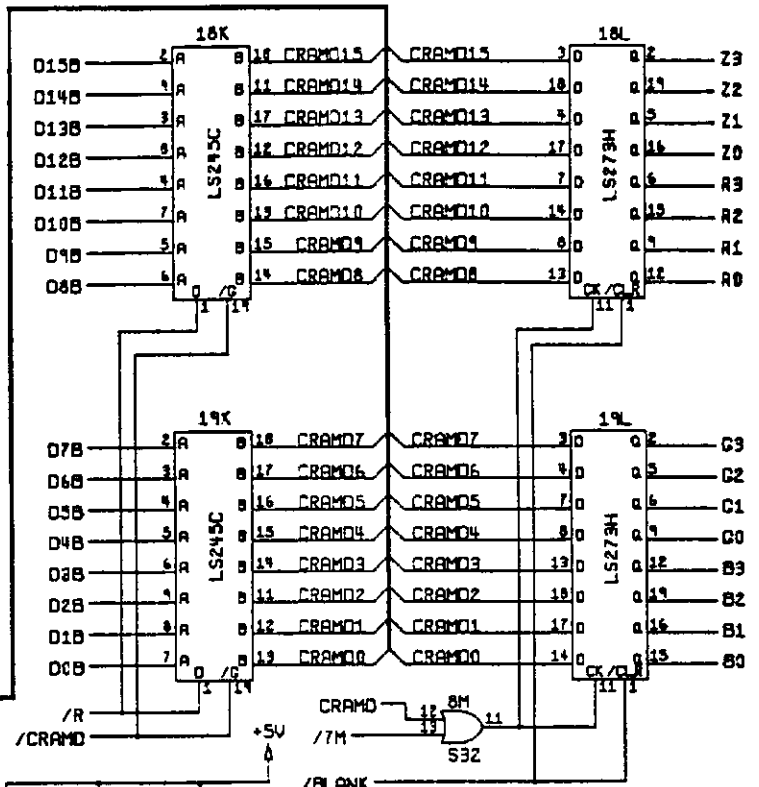
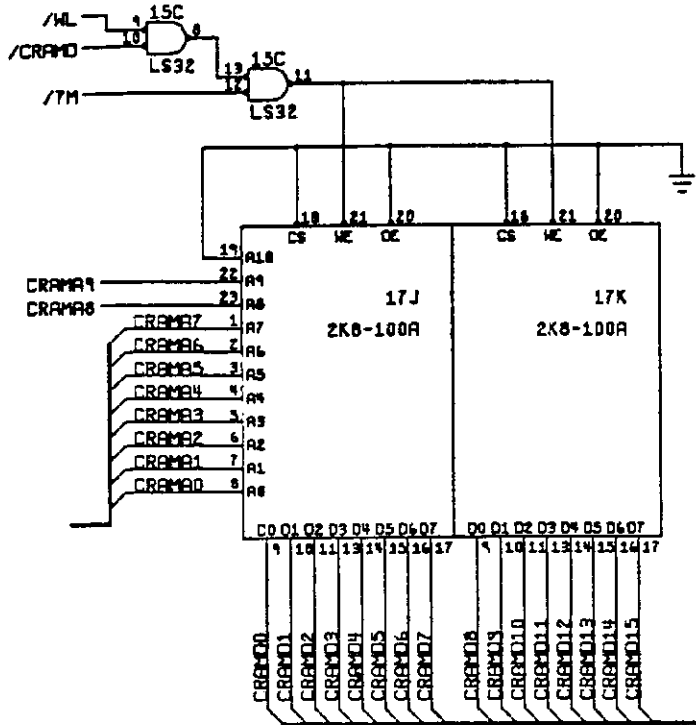
CONFIDENTIAL. Reproduction forbidden without the specific written permission of Atari Games Corporation, Milpitas, CA. This drawing is only conditionally issued, and neither receipt nor possession thereof confers or transfers any right in, or license to use, the subject matter of the drawing or any design or technical information shown thereon, nor any right to reproduce this drawing or any part thereof. Except for manufacture by vendors of Atari Games Corporation, and for manufacture under the corporation's written license, no right is granted to reproduce this drawing or the subject matter thereof, unless by written agreement with or written permission from the corporation.

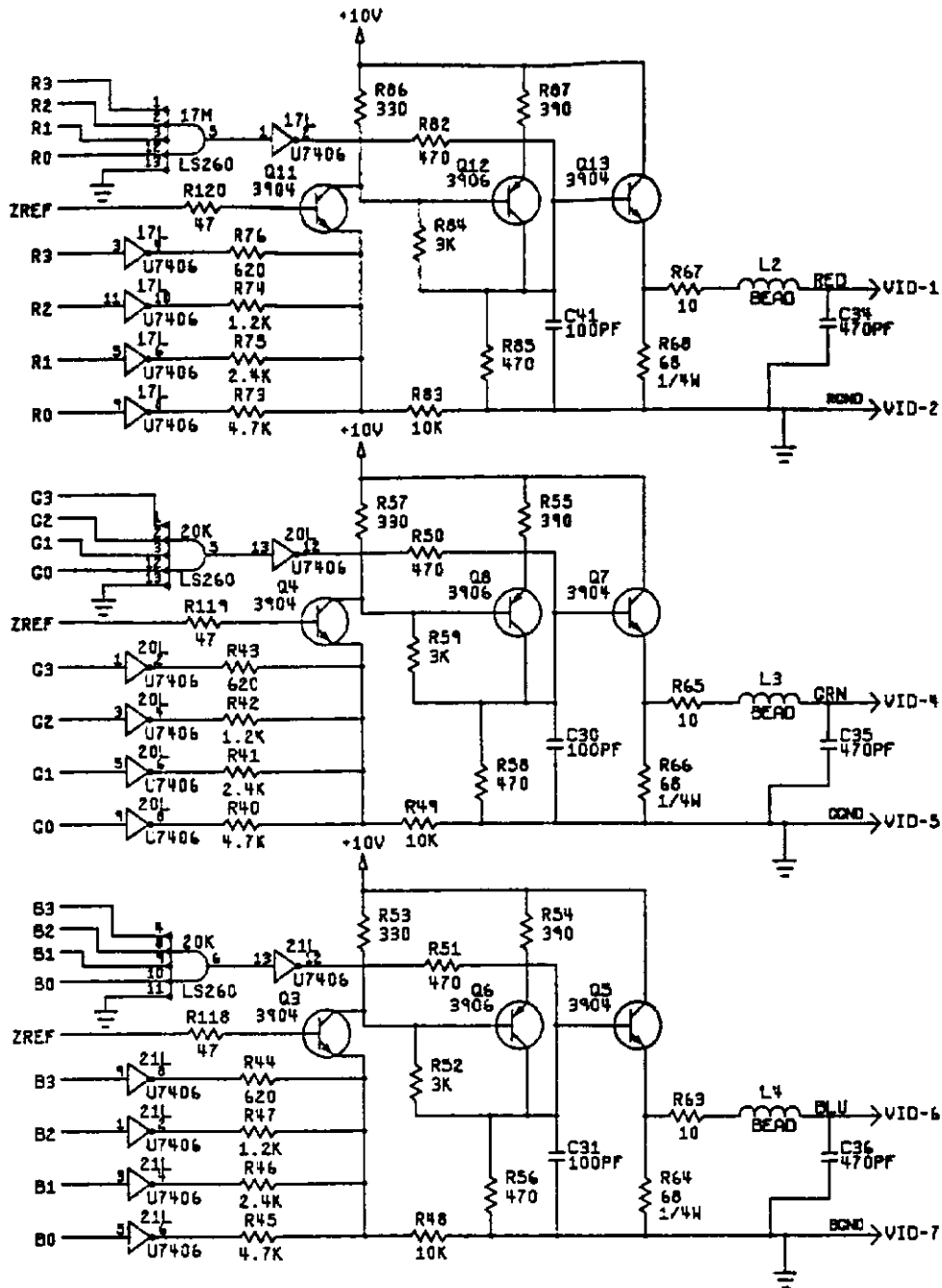


**Xybots™ Game PCB Assembly  
Schematic Diagram**

© 1987 Atari Games Corporation

SP-313 Sheet 8  
1st printing





**NOTICE TO ALL PERSONS  
RECEIVING THIS DRAWING**

CONFIDENTIAL: Reproduction forbidden without the specific written permission of Atari Games Corporation, Milpitas, CA. This drawing is only conditionally issued, and neither receipt nor possession thereof confers or transfers any right in, or license to use, the subject matter of the drawing or any design or technical information shown thereon, nor any right to reproduce this drawing or any part thereof. Except for manufacture by vendors of Atari Games Corporation, and for manufacture under the corporation's written license, no right is granted to reproduce this drawing or the subject matter thereof, unless by written agreement with or written permission from the corporation.

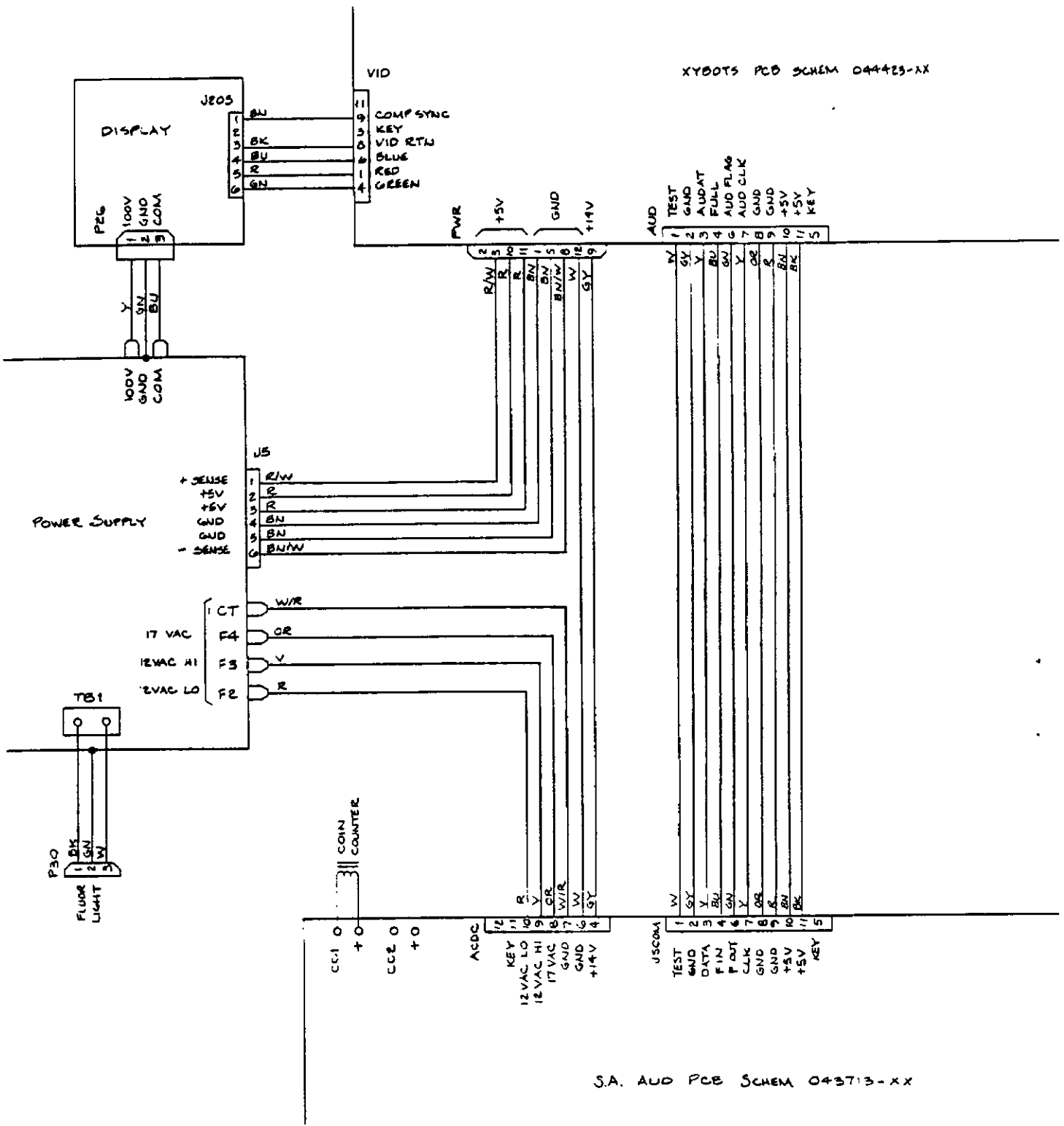


**Xybots™ Game PCB Assembly  
Schematic Diagram**

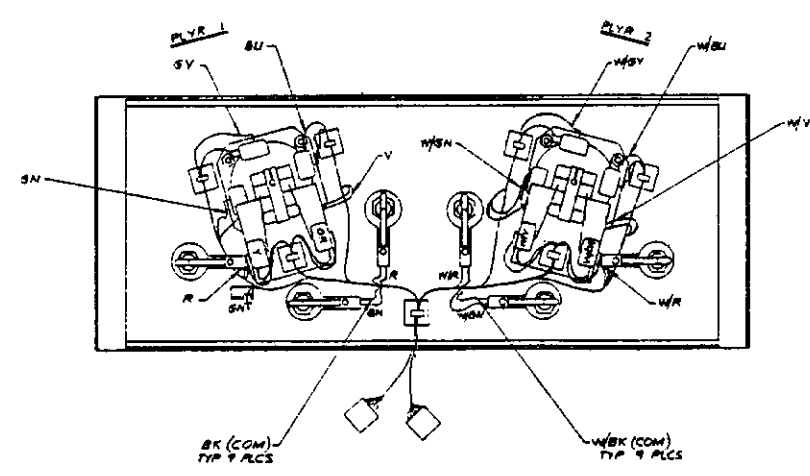
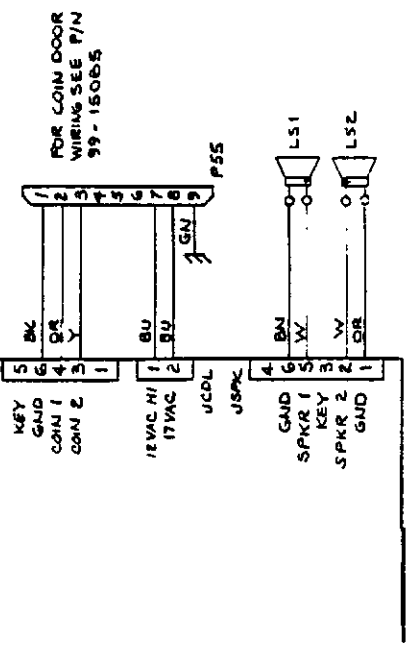
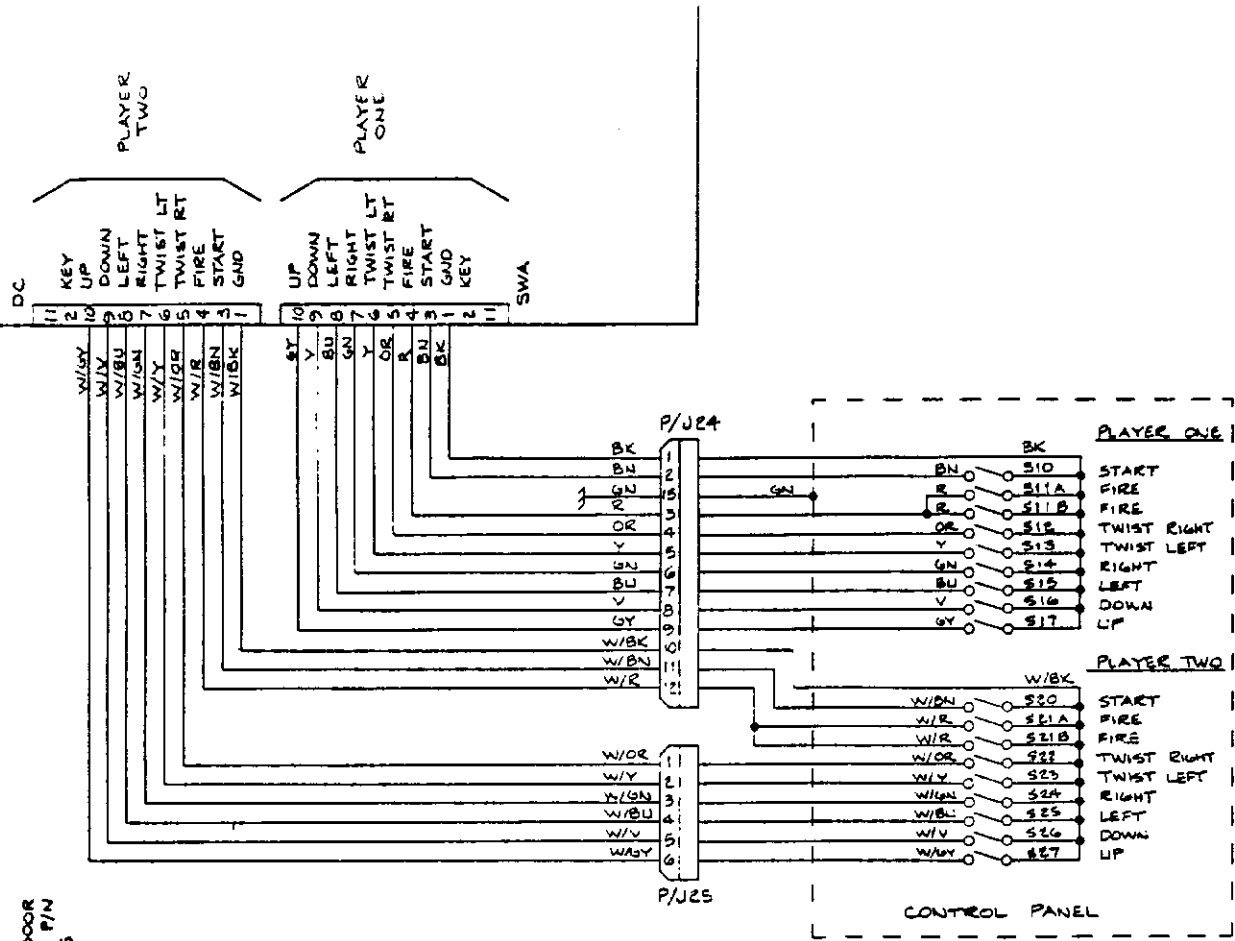
© 1987 Atari Games Corporation

SP-313 Sheet 9  
1st printing

XYBOOTS PCB SCHEM 044423-XX



S.A. AUD PCB SCHEM 043713-XX



**NOTICE TO ALL PERSONS RECEIVING THIS DRAWING**

CONFIDENTIAL. Reproduction forbidden without the specific written permission of Atari Games Corporation, Menlo Park, CA. This drawing is only conditionally issued, and neither receipt nor possession thereof confers or transfers any right in, or license to use, the subject matter of the drawing or any design or technical information shown thereon, nor any right to reproduce this drawing or any part thereof. Except for manufacture by vendors of Atari Games Corporation, and for manufacture under the corporation's written license, no right is granted to reproduce this drawing or the subject matter thereof, unless by written agreement with or written permission from the corporation.

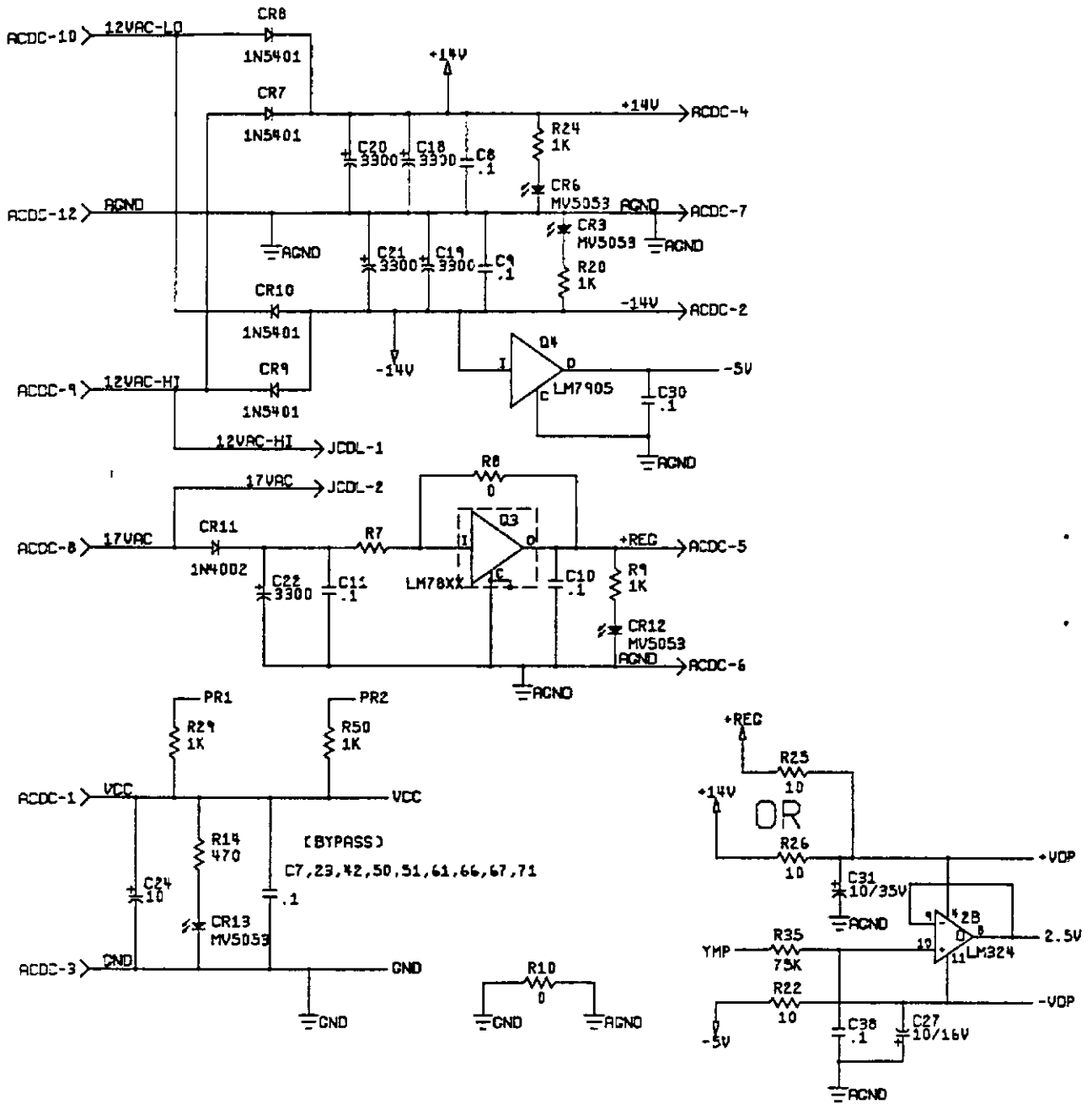
**ATARI GAMES**

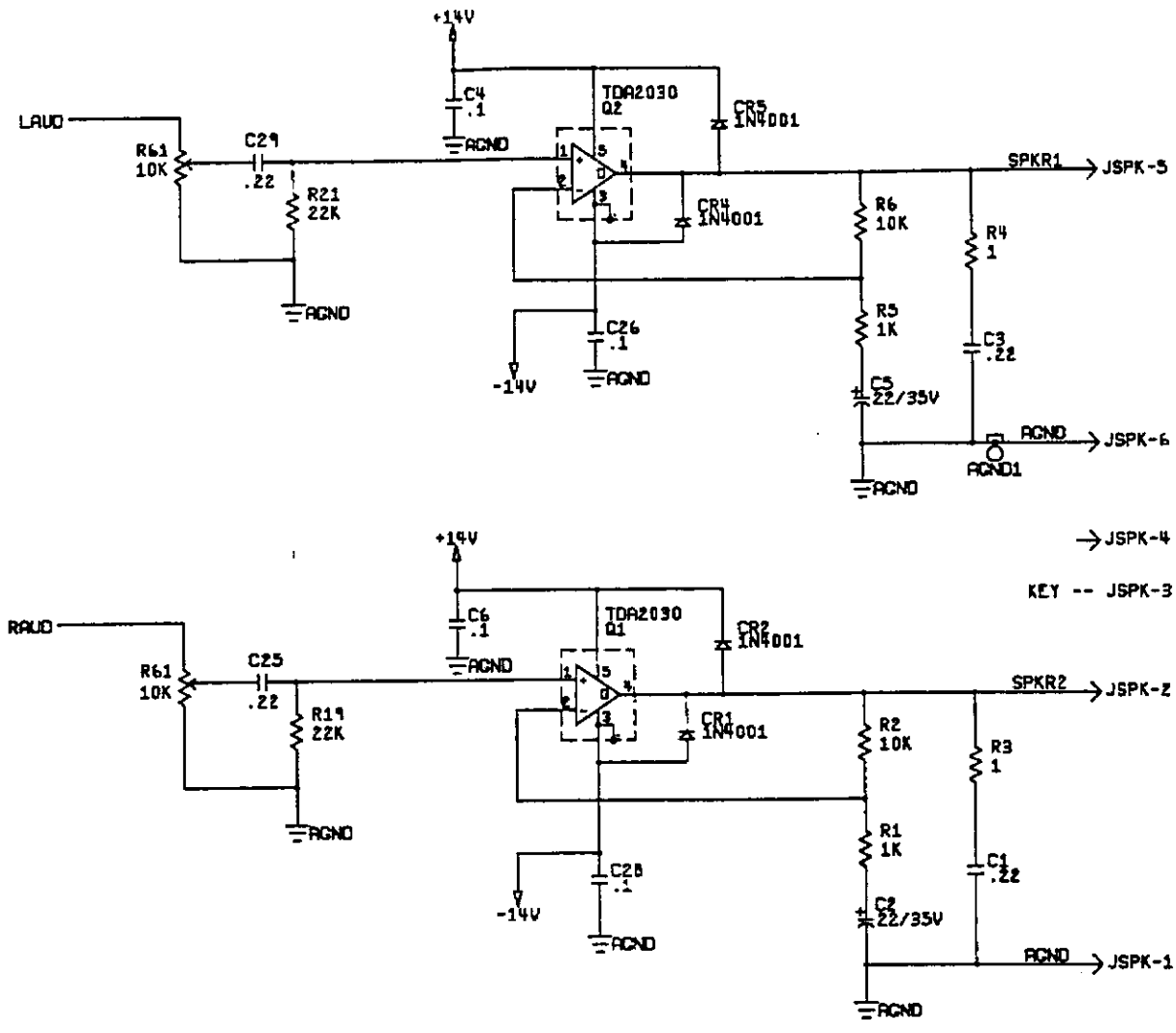
**Xybots™ Main Wiring Diagram and Detailed Control Panel Wiring Diagram**

© 1987 Atari Games Corporation

SP-313 Sheet 10  
1st printing

ACDC-11 -- KEY





**NOTICE TO ALL PERSONS RECEIVING THIS DRAWING**

CONFIDENTIAL. Reproduction forbidden without the specific written permission of Atari Games Corporation, Milpitas, CA. This drawing is only conditionally issued, and neither receipt nor possession thereof confers or transfers any right in, or license to use, the subject matter of the drawing or any design or technical information shown thereon, nor any right to reproduce this drawing or any part thereof, except for manufacture by vendors of Atari Games Corporation, and for manufacture under the corporation's written license, no right is granted to reproduce this drawing or the subject matter thereof, unless by written agreement with or written permission from the corporation.

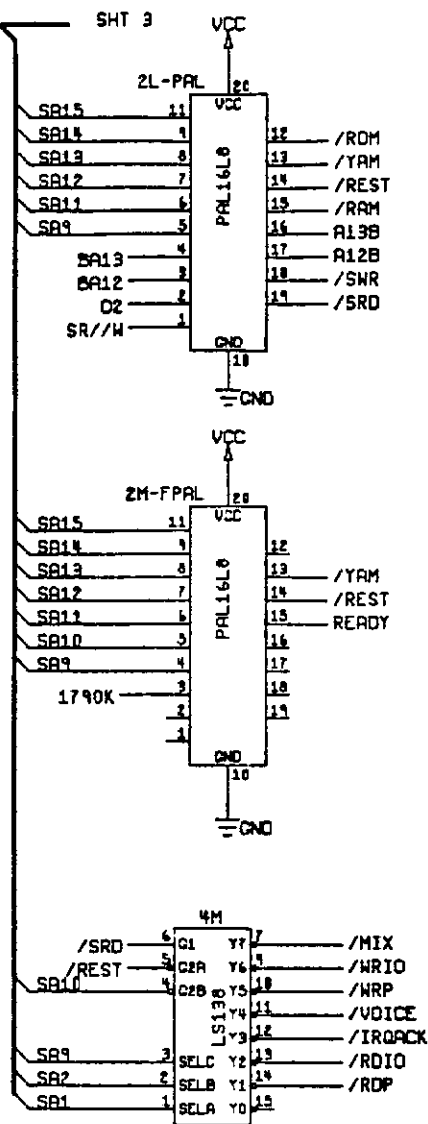


**Stand-Alone Audio PCB Assembly Schematic Diagram (Sheet 1 of 4)**

© 1987 Atari Games Corporation

SP-313 Sheet 11  
1st printing





**NOTICE TO ALL PERSONS  
RECEIVING THIS DRAWING**

CONFIDENTIAL Reproduction forbidden without the specific written permission of Atari Games Corporation, Milpitas, CA. This drawing is only conditionally issued, and neither receipt nor possession thereof confers or transfers any right in, or license to use, the subject matter of the drawing or any design or technical information shown thereon, nor any right to reproduce this drawing or any part thereof. Except for manufacture by vendors of Atari Games Corporation, and for manufacture under the corporation's written license, no right is granted to reproduce this drawing or the subject matter thereof, unless by written agreement with or written permission from the corporation.

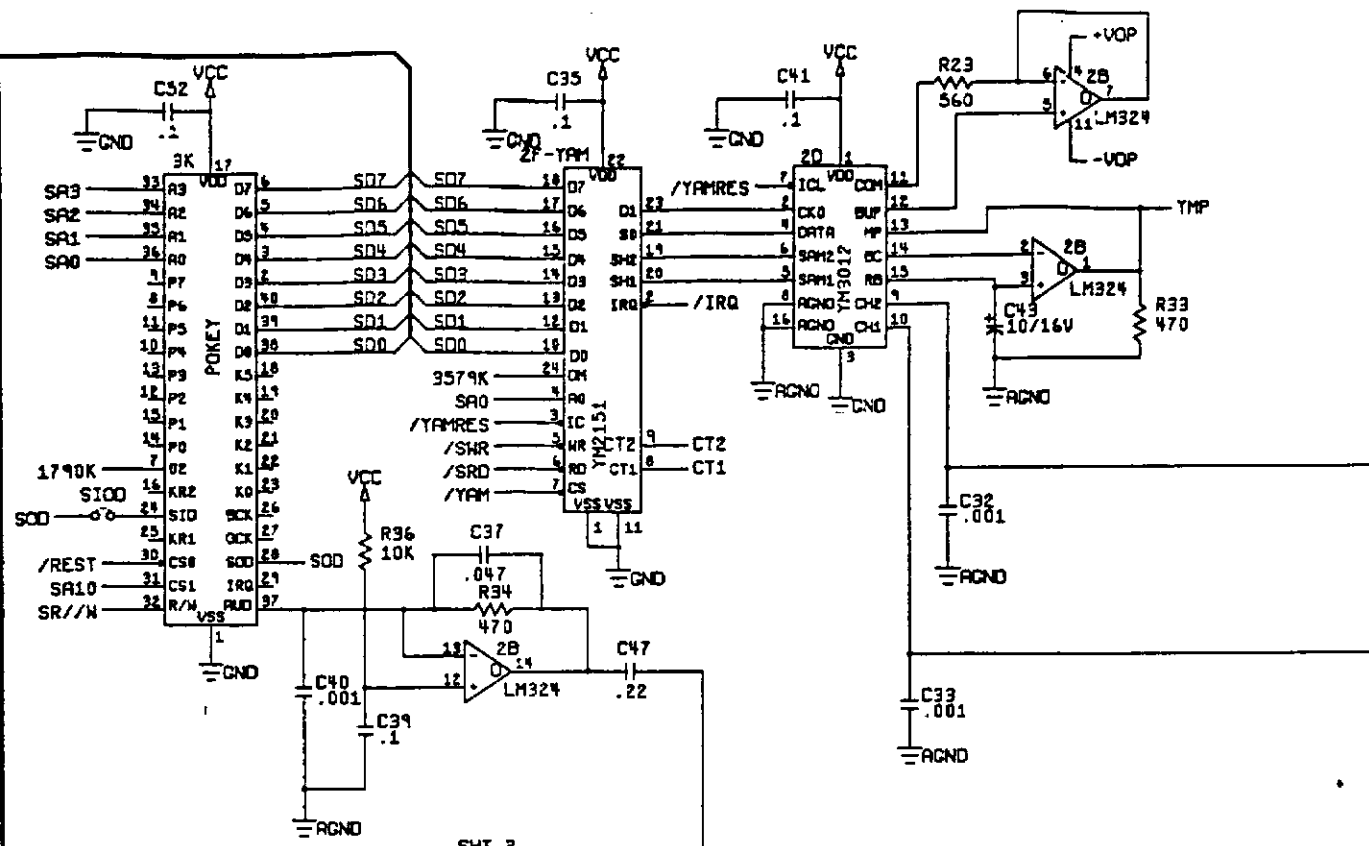


**Stand-Alone Audio PCB Assembly  
Schematic Diagram (Sheet 2 of 4)**

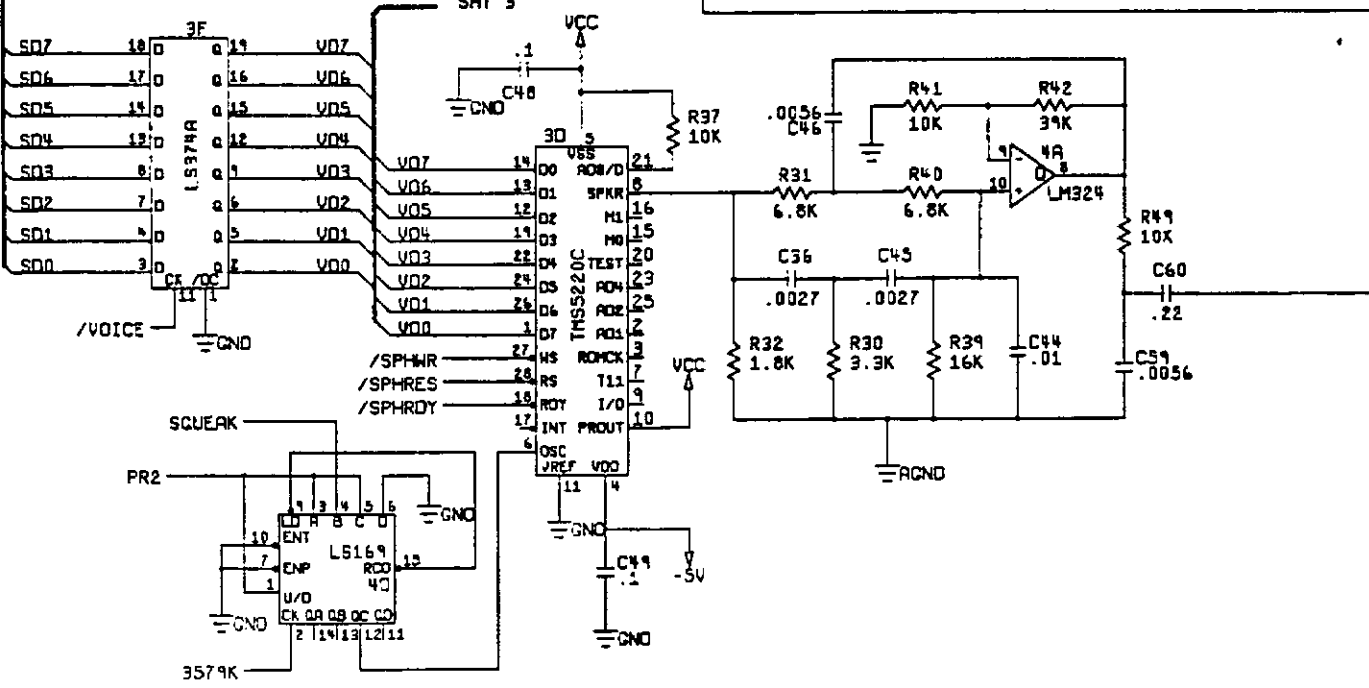
© 1987 Atari Games Corporation

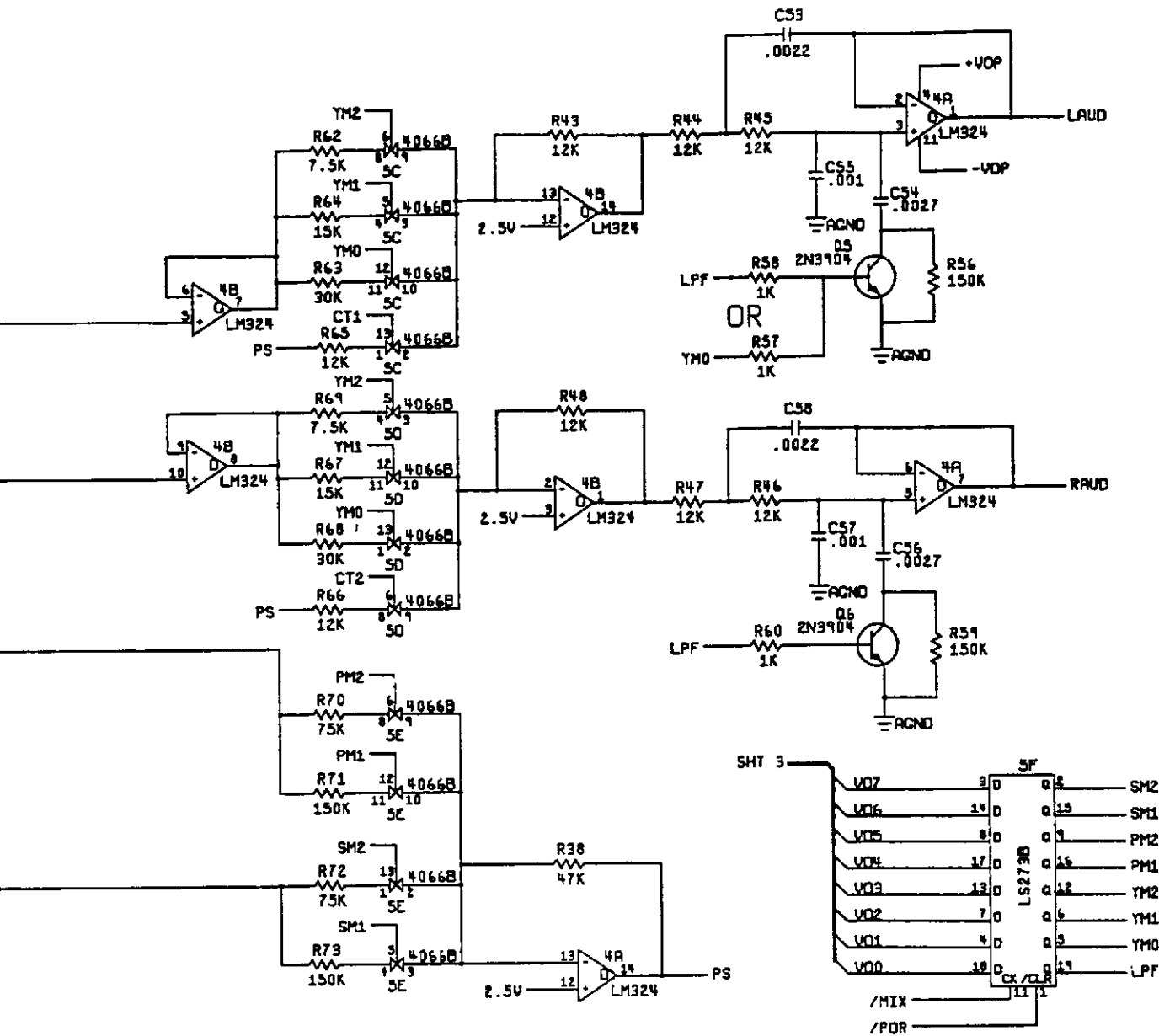
SP-313 Sheet 12  
1st printing

SHT 2



SHT 3





**NOTICE TO ALL PERSONS RECEIVING THIS DRAWING**

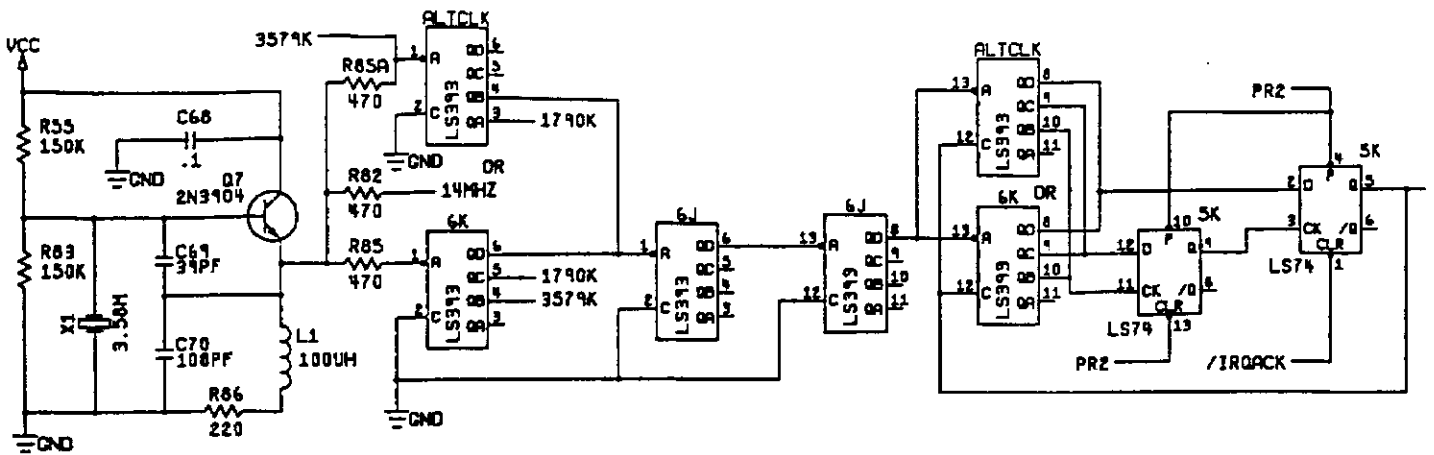
CONFIDENTIAL - Reproduction forbidden without the specific written permission of Atari Games Corporation, Milpitas, CA. This drawing is only conditionally issued, and neither receipt nor possession thereof confers or transfers any right in, or license to use, the subject matter of the drawing or any design or technical information shown thereon, nor any right to reproduce this drawing or any part thereof. Except for manufacture by vendors of Atari Games Corporation, and for manufacture under the corporation's written license, no right is granted to reproduce this drawing or the subject matter thereof, unless by written agreement with or written permission from the corporation.



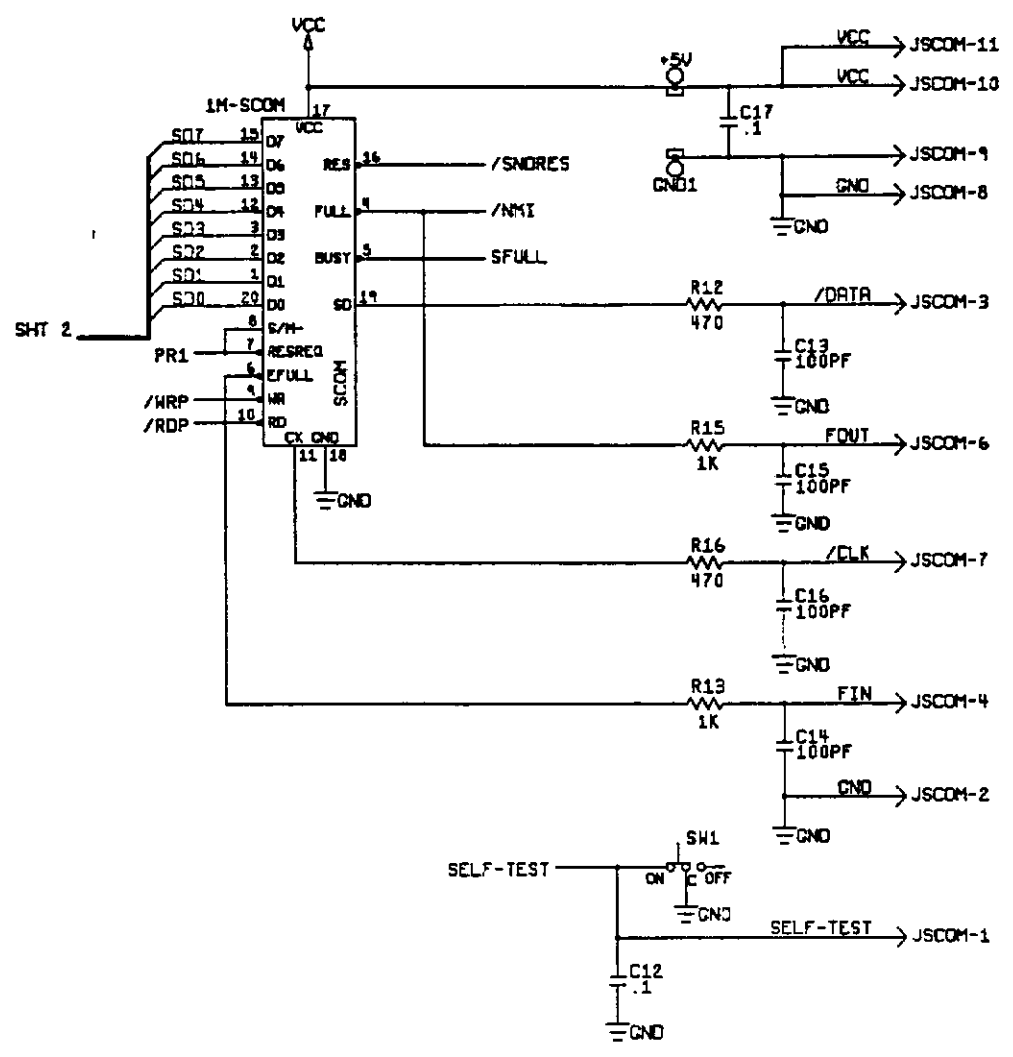
**Stand-Alone Audio PCB Assembly Schematic Diagram (Sheet 3 of 4)**

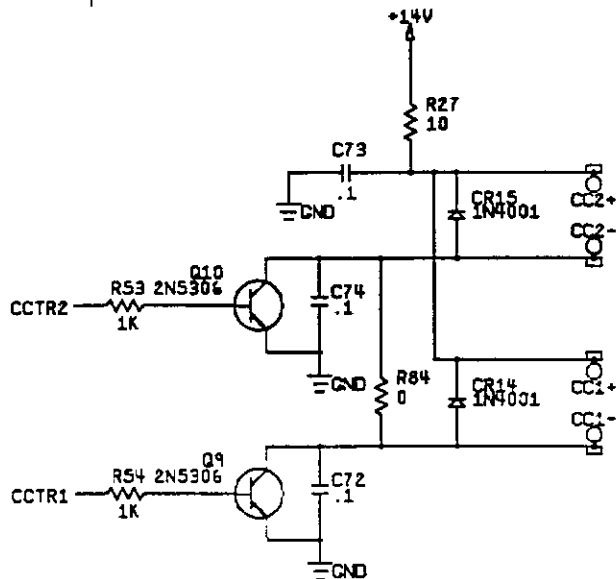
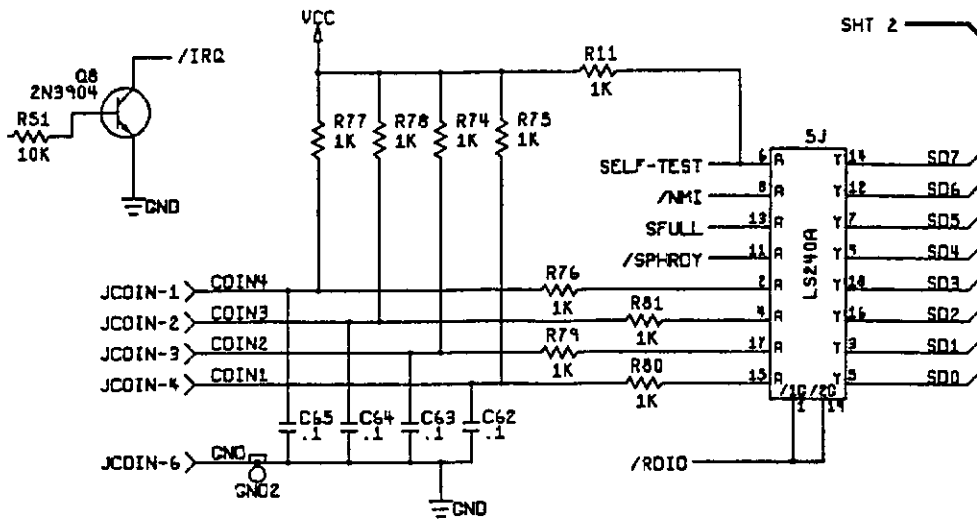
© 1987 Atari Games Corporation

SP-313 Sheet 13  
1st printing



KEY -- JSCOM-5





**NOTICE TO ALL PERSONS  
RECEIVING THIS DRAWING**

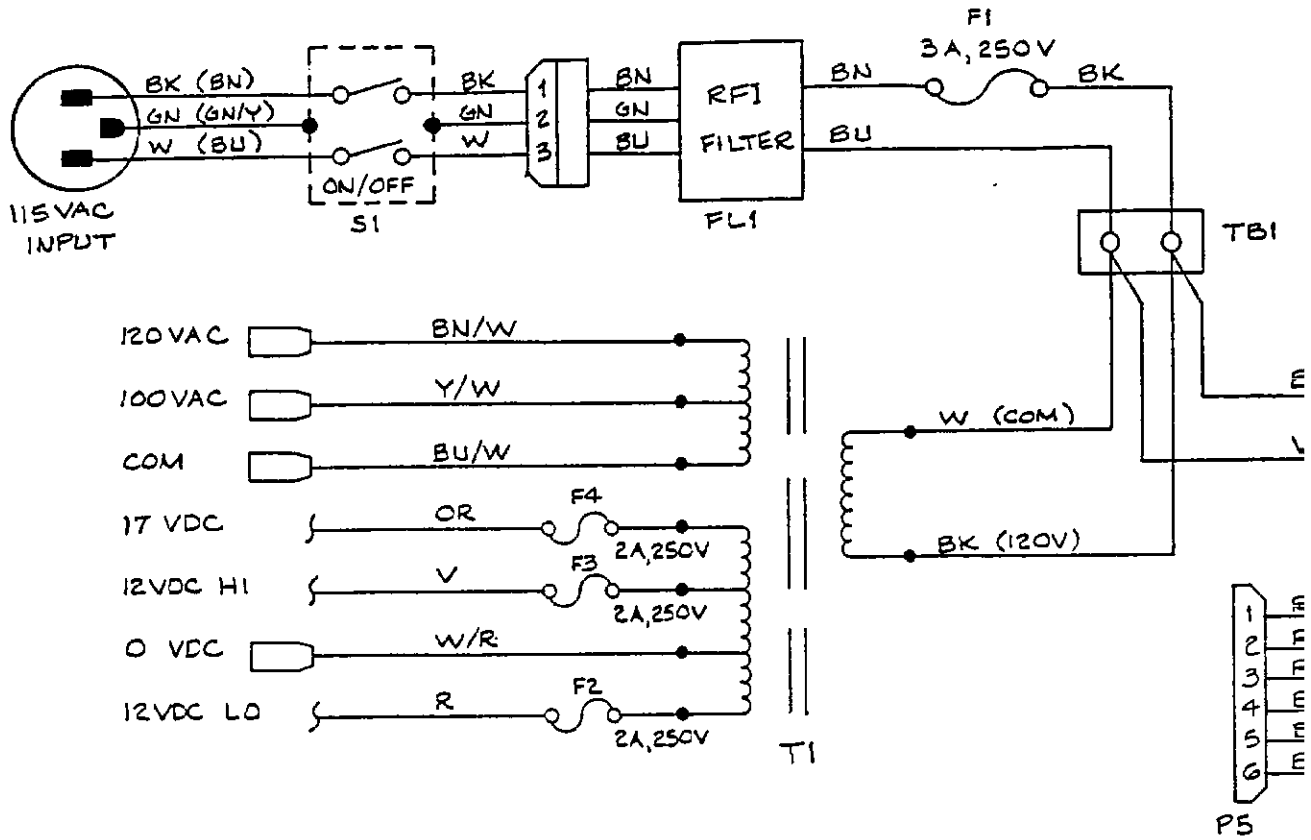
CONFIDENTIAL. Reproduction forbidden without the specific written permission of Atari Games Corporation, Milpitas, CA. This drawing is only conditionally issued, and neither receipt nor possession thereof confers or transfers any right in, or license to use, the subject matter of the drawing or any design or technical information shown thereon, nor any right to reproduce this drawing or any part thereof. Except for manufacture by vendors of Atari Games Corporation, and for manufacture under the corporation's written license, no right is granted to reproduce this drawing or the subject matter thereof, unless by written agreement with or written permission from the corporation.



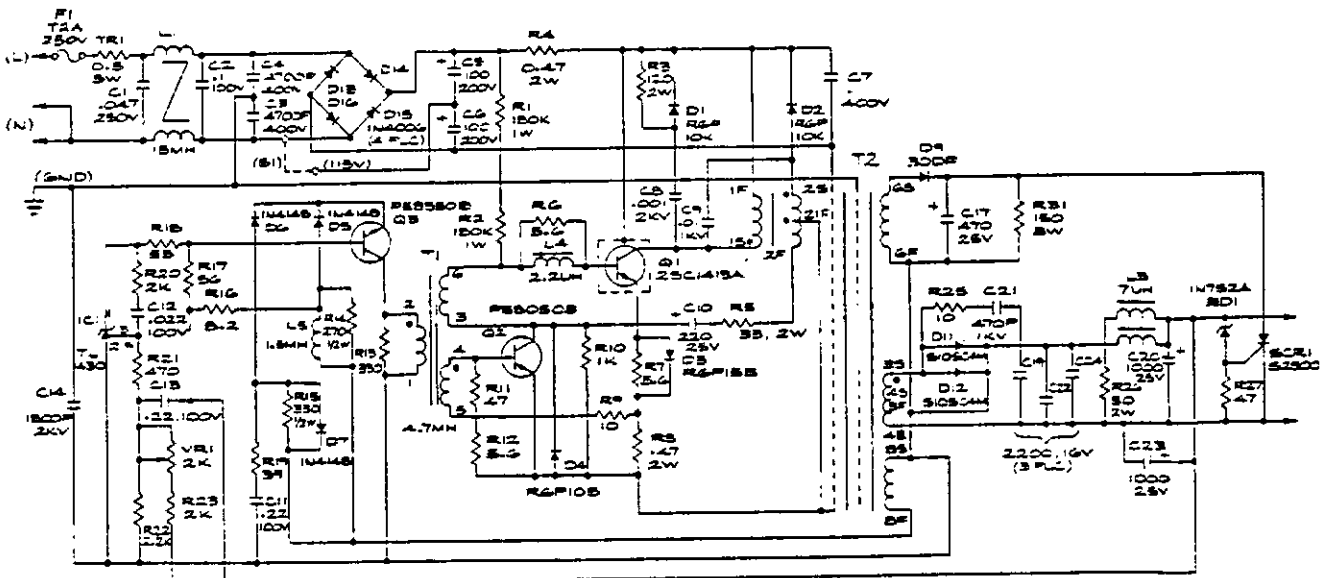
**Stand-Alone Audio PCB Assembly  
Schematic Diagram (Sheet 4 of 4)**

© 1987 Atari Games Corporation.

SP-313 Sheet 14  
1st printing

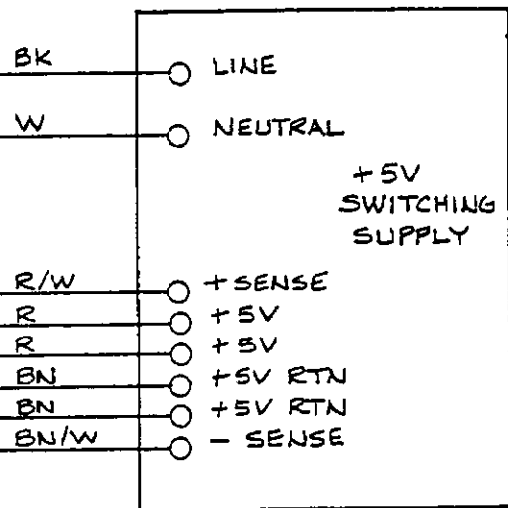


Switching/Linear (SL) Power Supply

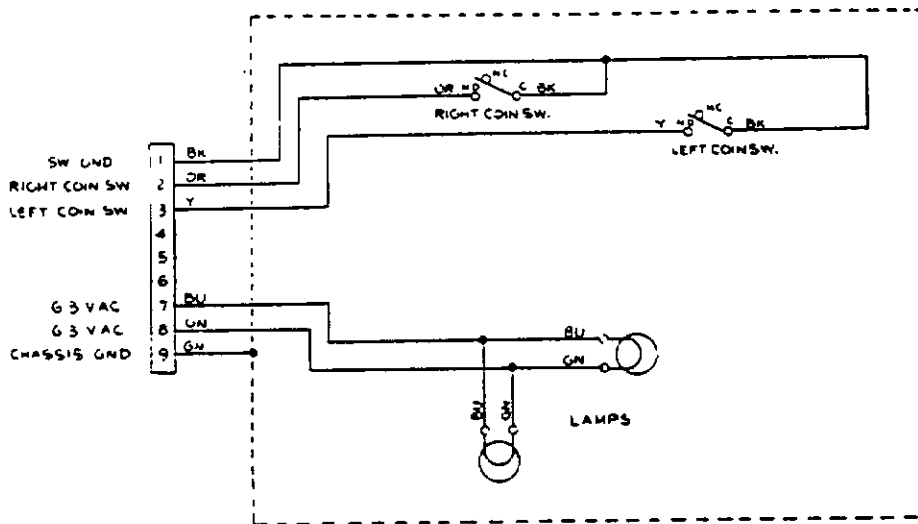


ATARI PART NO. 149008-008 (120V)  
149008-103 (240V)

Hitron 5V 10A Switching Power Supply



### Coin Door Wiring Diagram



**NOTICE TO ALL PERSONS RECEIVING THIS DRAWING**

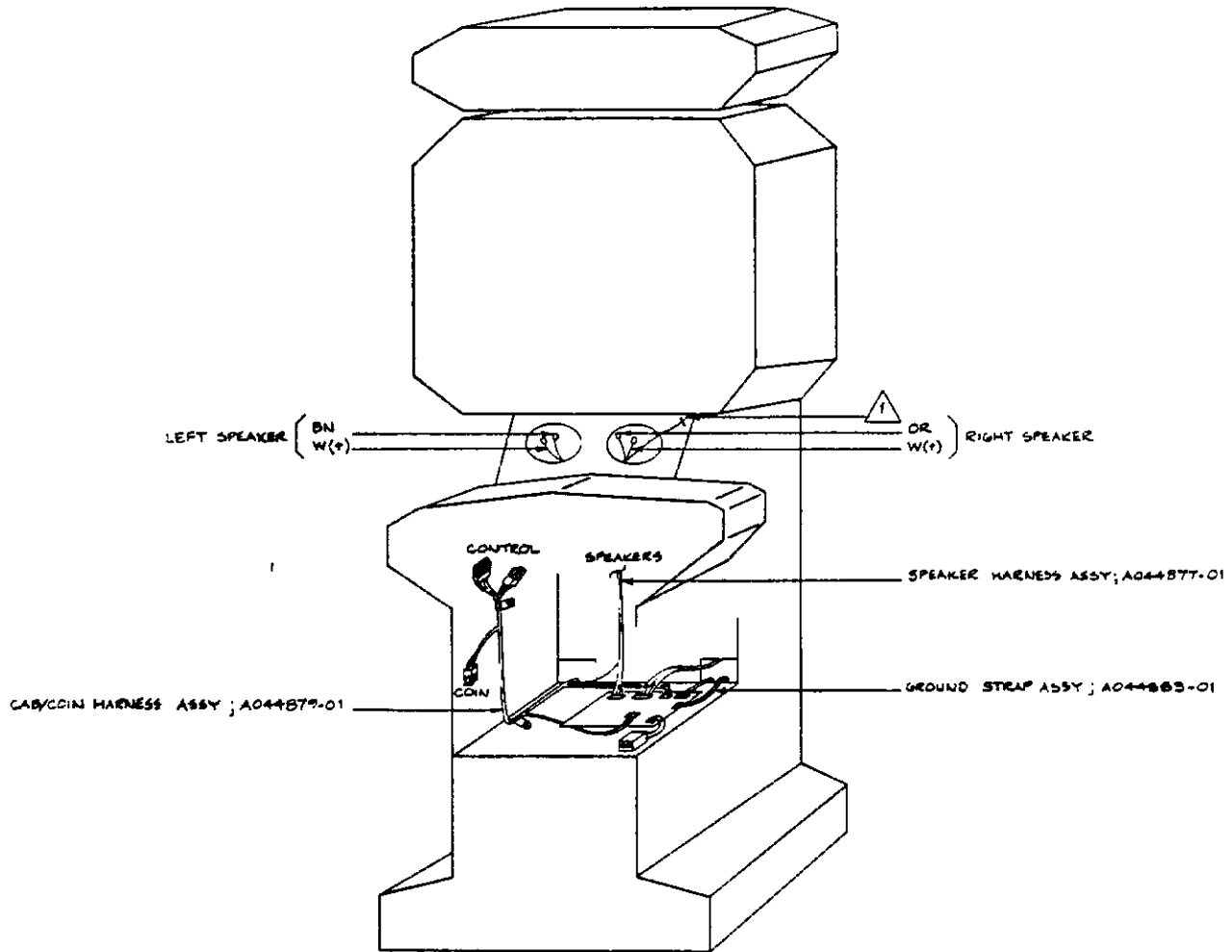
CONFIDENTIAL: Reproduction forbidden without the specific written permission of Atari Games Corporation, Milpitas, CA. This drawing is only conditionally issued, and neither receipt nor possession thereof confers or transfers any right in, or license to use, the subject matter of the drawing or any design or technical information shown thereon, nor any right to reproduce this drawing or any part thereof. Except for manufacture by vendors of Atari Games Corporation, and for manufacture under the corporation's written license, no right is granted to reproduce this drawing or the subject matter thereof, unless by written agreement with or written permission from the corporation.



**Wiring Diagrams for Switching/Linear (SL) Power Supply, Hitron 5V 10A Switching Power Supply, and Coin Door**

© 1987 Atari Games Corporation

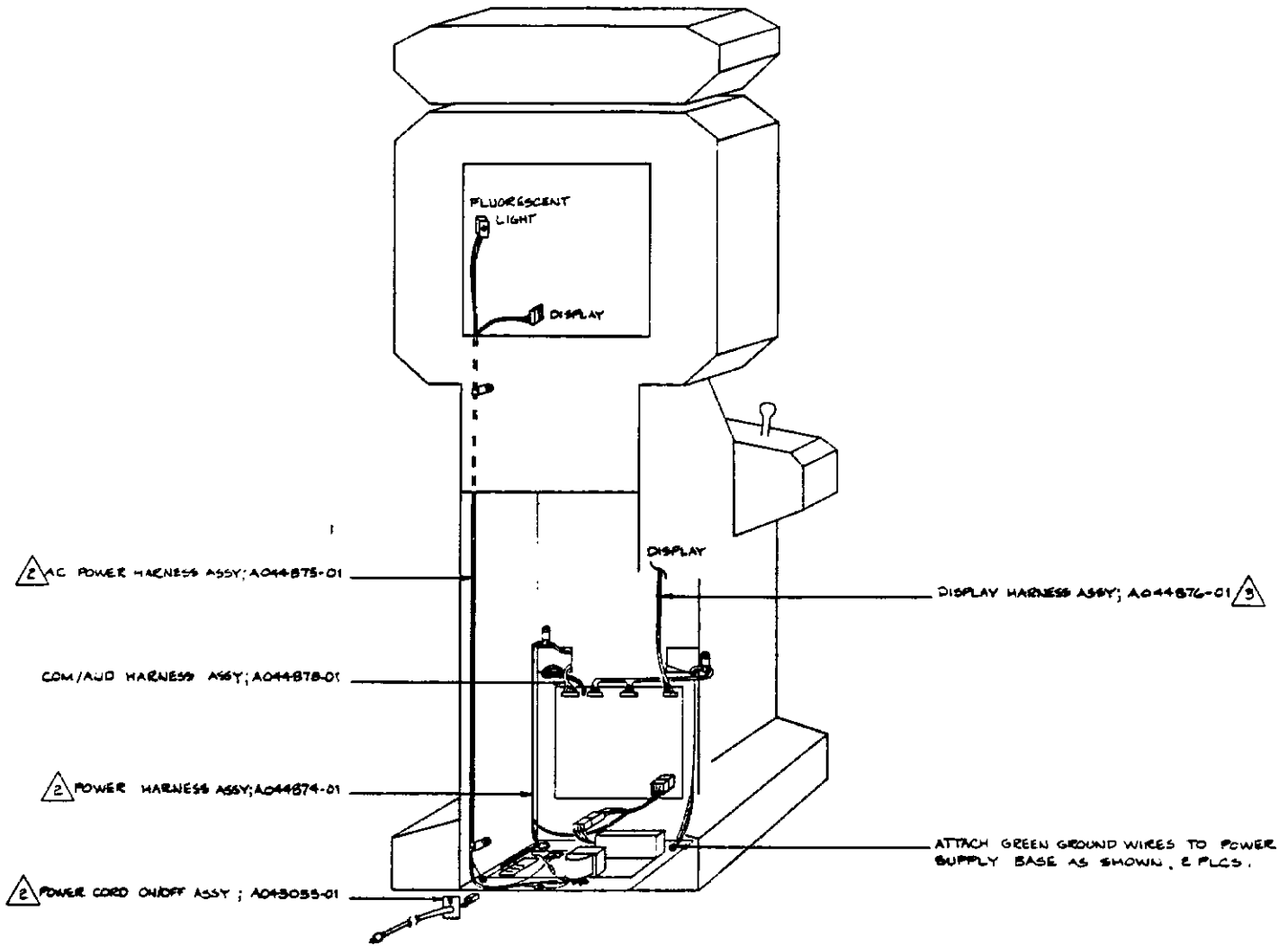
SP-313 Sheet 15  
1st printing



NOTES

- ① STAPLE GREEN GROUND WIRE TO SPEAKER PANEL WHERE SHOWN.
- ② CONNECT HARNESS ASSY. TO CORRESPONDING COLORS ON POWER SUPPLY.
- ③ ATTACH DISPLAY HARNESS ASSY TO DISPLAY BEFORE INSTALLING IN CABINET.





**NOTICE TO ALL PERSONS  
RECEIVING THIS DRAWING**

CONFIDENTIAL. Reproduction forbidden without the specific written permission of Atari Games Corporation, Milpitas, CA. This drawing is only conditionally issued, and neither receipt nor possession thereof confers or transfers any right in, or license to use, the subject matter of the drawing or any design or technical information shown thereon, nor any right to reproduce this drawing or any part thereof. Except for manufacture by vendors of Atari Games Corporation, and for manufacture under the corporation's written license, no right is granted to reproduce this drawing or the subject matter thereof, unless by written agreement with or written permission from the corporation.



**Xybots Harness Installation**

© 1987 Atari Games Corporation

SP-313 Sheet 16  
1st printing